

SCOUTTM
by HamiltonBuhl®

6 Lens Digital Microscope Instruction Manual

Model #: SCT18



HB Hamilton
Buhl
Never-Ending Learning Innovation

www.HamiltonBuhl.com

CONTENTS

BEFORE USE	4	USING THE XPLOVIEW SOFTWARE	16
Important Information	4	Button Menu	16
Care and Maintenance	4	Full Screen Viewing Image	17
Warning	4	Rotation/Flip System	18
Product Description	5	Settings Menu	19
Computer Requirements	5	Device Setup	20
		Timed Shot Setup	20
PRODUCT AT A GLANCE	6	Movie Setup	20
Package Contents	6	Save Setting	21
Product Overview	7	Language Settings	21
Product Specifications	8	Advanced Settings	22
		Saved Files	23
GETTING STARTED	9	Uninstalling the xploview Software	23
Software Installation	9		
Connecting the Device	10		
Starting the xploview Software	10		
Installing a Specimen Slide	11		
BASICS	12		
Selecting a Light Source	12		
Selecting Magnification Power	13		
Focusing	14		
Taking a Snapshot	15		

BEFORE USE

Important Information

Please read this instruction manual carefully before using this product, and retain for future reference.

Changes to instructions may occur without notice due to improvements to the software and/or equipment.

Care and Maintenance

- Avoid vibration, shock and pressure, and do not drop the microscope.
- Keep the device dry and protect from water, steam or vapor.
- Do not leave your device in a place with extreme high or low temperature.
- Do not touch the device with wet hands as it may damage the device, or cause electric shock to the user.
- Do not use or store the device in dusty, dirty areas as it could cause damage to moving parts.
- Do not use harsh chemicals, cleaning solvents or strong detergents to clean the device. Wipe it with a soft cloth slightly dampened in a mild soap-and-water solution.

Warning

- Do not look directly into any light on the digital microscope.
- Do not attempt to open or dismantle the digital microscope.

Product Description

- This product differs from a traditional optical microscope; instead of looking through an eyepiece, magnified image or live video is displayed on the computer monitor via a USB connection.
- This product has an integrated object turret carrying six different object lenses. When viewing the image on a 17" monitor, this product can magnify specimens at 100x, 200x, 300x, 400x, 500x and 600x. The magnification is dependent on the size of the computer monitor – the larger the monitor, the higher the magnification.
- Snapshot of the specimens can be captured using the snapshot button located on the top of the device. Live videos and snapshots can also be captured and stored on the computer using the software provided.

Computer Requirements

Windows

Compatible Operating Systems

Windows 10 (32 bit or 64 bit)
Windows 8 (32 bit or 64 bit)
Windows 7 (32 bit or 64 bit)
Windows Vista (32 bit or 64 bit)
Windows XP SP2, SP3

USB

USB 2.0

Mac OS

Compatible operating systems

Mac OS X 10.5.6 - Mac OS X 10.13.x

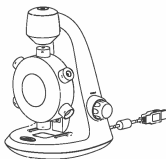
USB

USB 2.0

PRODUCT AT A GLANCE

Package contents

Digital microscope with USB cable



Installation CD



Blank specimen slides x3
Prepared slide with cotton swatch



User manual



Tweezers



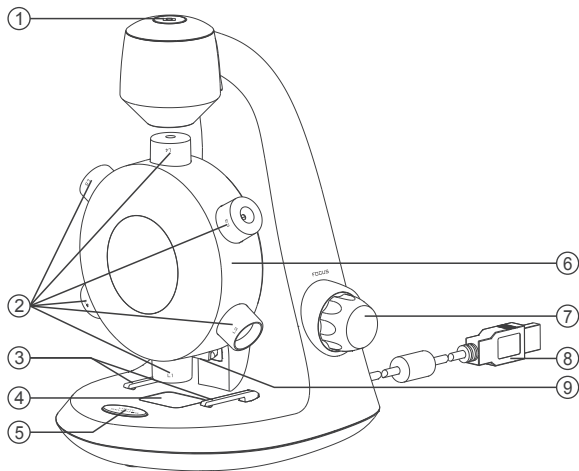
Dropper



Specimen Slide Covers x6



Product Overview



1. Snapshot button
2. Lenses
3. Specimen slide clip
4. Specimen stage
5. Light selector switch
6. Lens turret
7. Focusing knob
8. USB cable
9. LED


Product Specifications

Connection type	USB 2.0
Effective observation area	L1 = 3.6 x 2.7mm L2 = 1.8 x 1.4mm L3 = 1.2 x 0.9mm L4 = 0.9 x 0.7mm L5 = 0.7 x 0.5mm L6 = 0.6 x 0.45mm
Magnification power (viewing on a 17" monitor)	L1 = 100x L2 = 200x L3 = 300x L4 = 400x L5 = 500x L6 = 600x
Illumination	LED
Power supply	5V $\overline{\text{---}}$ 250mA (via USB)
Sensor	CMOS
Maximum snapshot resolution	1600 x 1200 pixels (UXGA)
Maximum video capturing resolution	640 x 480 pixels (VGA)
Size	5.1" x 6.1" x 8.2"
Weight	0.8 lbs.



GETTING STARTED

Software Installation

Windows

- Insert the supplied application CD to the CD-ROM of the computer.
- Double click the "xploview v3.2.xx.exe" icon <  > located on the driver CD.
- Follow the xploview setup wizard to install the application software for the digital microscope.

Mac OS


- Insert the supplied application CD to the CD-ROM of the computer.
- Double click the "xploview v3.2.xx.dmg" icon <  > located on the driver CD.
- Drag the xploview icon <  > into the Applications folder.

Connecting the Device


Connect the device to the computer using the USB cable provided.

Starting the xploview Software

Windows

The xploview software can be launched by double clicking the xploview icon <  > from the desktop, or from the start menu.

Mac OS

The xploview software can be launched by double clicking the xploview icon <  > from the Applications menu.

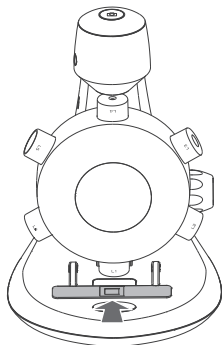
Note

When the device is connected to the computer for the first time, a driver will automatically be installed by Windows or Mac OS. This process could take a few minutes.

Each time the xploview software is started, the device should start up automatically. Otherwise, the device can be selected from the device setup section of the system settings menu.

Installing a Specimen Slide

Place a prepared specimen slide on the specimen stage and slide it into specimen slide clips to securely hold the specimen slide.



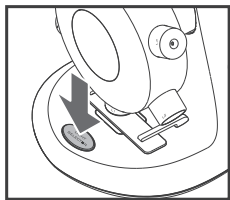
BASICS

Selecting a Light Source

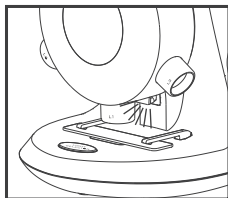
This digital microscope contains two light sources, one located above the stage and one underneath providing incident and transmitted illumination respectively.

When the device is connected to a computer, and the provided software is launched, one of the lights will turn on.

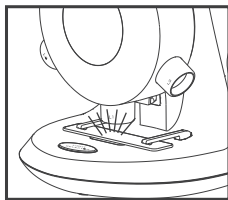
Press the light selector switch once to switch over to the desired illumination system. When quitting the software, the light will switch off automatically.



Press once to switch over illumination system



Incident illumination



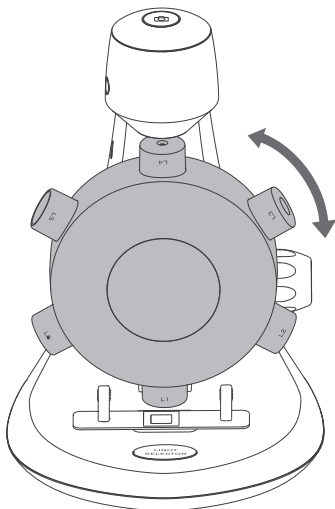
Transmitted illumination

Selecting Magnification Power

The objective turret can be rotated both ways – clockwise or counterclockwise.

Taking the least powerful lens, L1, as an example; rotate the turret so that L1 is directly on top of the specimen. When correctly aligned, you will feel a 'click'.

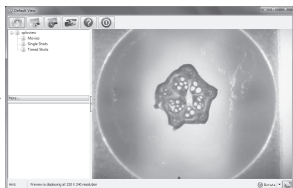
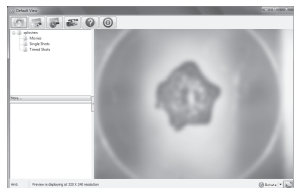
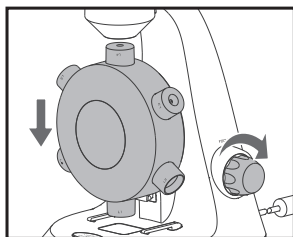
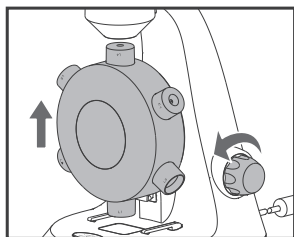
Rotate the turret to select the desired magnification.



Focusing

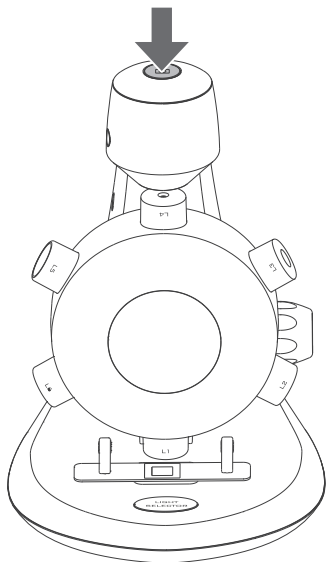
Rotate the focusing knob clockwise or counterclockwise until the image is sharp.

Note: Please make sure that the objective is clear from obstacles and does not hit the specimen slide while lowering the objectives turret during focusing.



Taking a Snapshot

Press the snapshot button to take a snapshot.



USING THE XPLOVIEW SOFTWARE

Button Menu

The icons on the button menu :



Open **System Settings Menu** (see system settings menu on page 19).



Capture on screen image.



To start and to stop **Timed Shot**. Images will be captured at a regular interval (see system settings menu on page 20 to adjust frequency and duration).



To start and stop **Video Recording**.




Information of the application software. This information may be helpful when updating software.



Shut down the application software.

Full Screen Viewing

To activate the full screen mode, click the full screen button  located on the bottom right corner of the xploview application software window.

To exit full screen mode, either double-click on the screen, or press the "Esc" button on the keyboard.

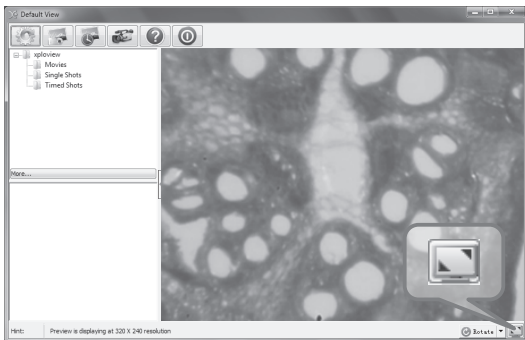
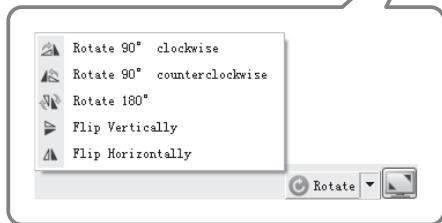
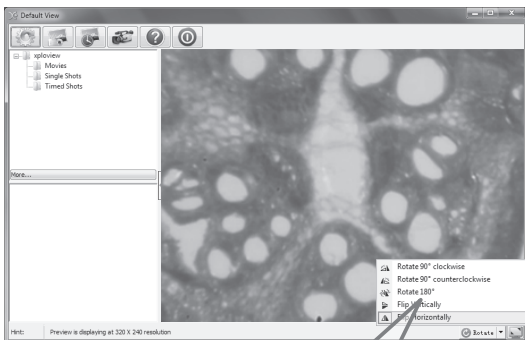


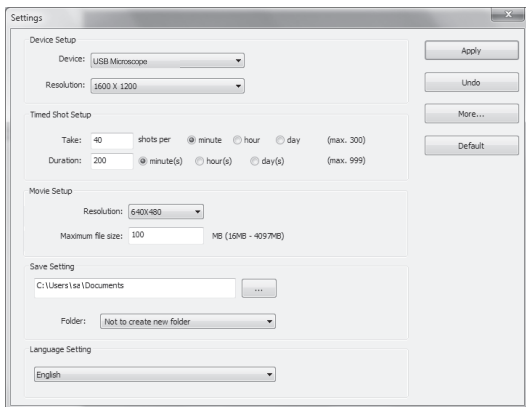
Image Rotation/Flip

Click <  Rotate > button to rotate or flip the image.



System Settings Menu

The first time the xploview software is started, the default settings will be loaded. You may change these settings manually in the system settings menu.



Device Setup

If the image captured by the digital microscope was not displayed by default, you can change this by selecting it from the "Device" drop-down menu.

The resolution of images you capture can be changed from the "Resolution" drop-down menu.

Device Setup

Device:

Resolution:

Timed Shot Setup

The frequency and duration of automatic images capture can be adjusted under this option.

Timed Shot Setup

Take: shots per minute hour day (max. 300)

Duration: minute(s) hour(s) day(s) (max. 999)

Movie Setup

The resolution of videos you record can be changed from the "Resolution" menu. You can also set a maximum file size for each video.

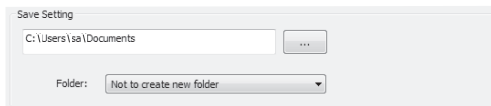
Movie Setup

Resolution:

Maximum file size: MB (16MB - 4097MB)

Save Settings

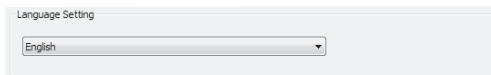
The default location for captured images or videos can be changed under this option.



The screenshot shows a dialog box titled "Save Setting". It contains a text input field with the path "C:\Users\sa\Documents" and a button with three dots to its right. Below this is a label "Folder:" followed by a dropdown menu currently displaying "Not to create new folder".

Language Settings

The language of the xploview software can be changed under this option.

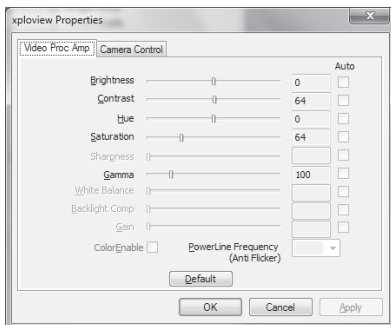


The screenshot shows a dialog box titled "Language Setting". It features a single dropdown menu with "English" selected.

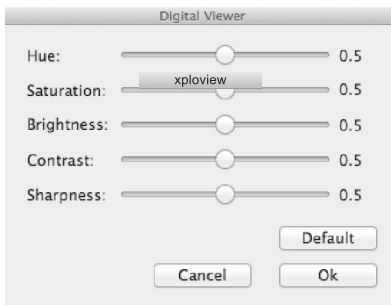
Advanced Settings

By clicking the "More..." button on the right of the system settings menu, you will be able to manually adjust all of the image settings. Note that the settings available may be different, depending on your operating system.

Windows

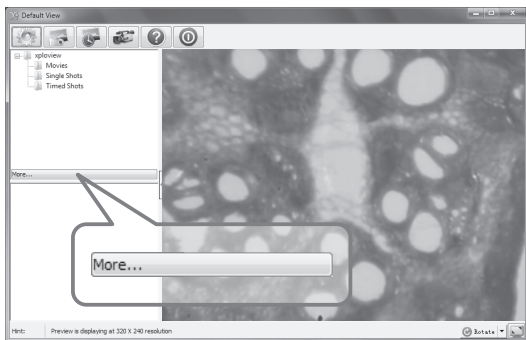


Mac OS



Saved Files

With the xploview application software opened, you can locate the saved files folder by clicking the "More..." button located on the left of the main software window.



Uninstalling the xploview Software

Windows

Select "Uninstall" from the start menu (Start > All Programs > xploview > Uninstall).

Mac OS

Drag the xploview application icon from the "Applications" folder to "Trash".



FCC compliance statement (United States only)

This device complies with part 15 of the FCC Rules. Operation is subject to the following two conditions: (1) This device may not cause harmful interference, and (2) this device must accept any interference received, including interference that may cause undesired operation.

Changes or modifications not expressly approved by the party responsible for compliance could void the user's authority to operate this device.

This device has been tested and found to comply with the limits for a Class B digital device, pursuant to part 15 of the FCC Rules. These limits are designed to provide reasonable protection against harmful interference in a residential installation. This device generates, uses and can radiate radio frequency energy and, if not installed and used in accordance with the instructions, may cause harmful interference to radio communications. However, there is no guarantee that interference will not occur in a particular installation. If this device does cause harmful interference to radio or television reception, which can be determined by turning the equipment off and on, the user is encouraged to try to correct the interference by one or more of the following measures:

- Reorient or relocate the receiving antenna.
- Increase the separation between the equipment and receiver.
- Connect the device into an outlet on a circuit different from that to which the receiver is connected.
- Consult the dealer or an experienced radio/TV technician for help.

One Year Warranty:

Warranty begins the date item ships from our warehouse. All products have a one year warranty from original date of shipment, unless otherwise noted.

Our Mission:

Since our founding in 1933, HamiltonBuhl® continues to evolve as a leader in technology products for education and industry. Our products are embraced by educators, corporate trainers, presenters, government agencies, and hospitals for their daily presentation, from the classroom to the boardroom, HamiltonBuhl® has the presentation product for you.

All rights reserved. Mac, Mac OS and OS X are trademarks of Apple Inc., registered in the U.S. and other countries. Windows is a registered trademark of Microsoft Corporation in the United States and other countries. All other trademarks and brands are property of their respective owners.



80 Little Falls Road
Fairfield, NJ 07004
1-800-631-0868
www.HamiltonBuhl.com