



MITCHELL WALL MOUNTED TABLE/BENCH SYSTEM: ARCHITECTURAL DATA



Laminate, Backer & Adhesive

GREENGUARD® Certified Components

PART I. - ATTENTION: SPECIFIER AND/OR ARCHITECT

Page

PART II. - MITCHELL WALL MOUNTED CABINETS

Figure A - Cabinet Variations.....2

Figure B – Front Elevation.....3

Figure C – Top And Side Views.....3

    A. Standard Dimensions For D-08 Series Cabinets .....4

    B. Standard Structural Materials.....4

    C. Standard Mechanical Features.....4

    D. Additional Series Options.....5

    E. Standard Set-In-Wall Cabinet Details.....5

    F. Standard Against-The-Wall Cabinet Details.....5

    G. ASC, ASR, And ASL Panel-Connected Cabinet Details.....5

    H. Special Cabinet Configurations / ADA.....5

PART III. - MITCHELL WALL MOUNTED TABLES AND BENCHES

A. Standard Structural Materials (Tables and Benches) .....5

B. Standard Mitchell Table Features.....6

C. Standard Mitchell Bench Features.....6

**MITCHELL WALL MOUNTED TABLE/BENCH SYSTEM: ARCHITECTURAL DATA**

I. **ATTENTION: SPECIFIER AND/OR ARCHITECT**

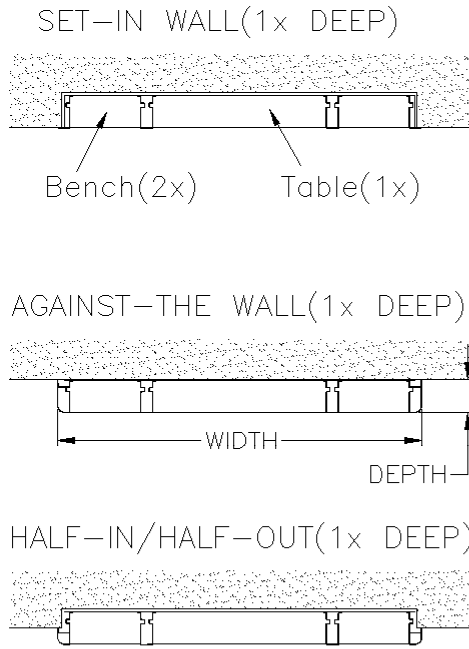
Thank you for your interest in our Mitchell Wall Mounted Table and Bench System which have been specified and utilized in multi-purpose rooms and schools nationwide since the 1950's. This system allows for the storage and removal of tables and benches. A typical unit has an all steel cabinet, equipped with one double length folding table and two double length folding benches that will comfortably seat **20 grade school or 16 high school students**. No other manufacturer of this type of wall mounted system offers more standard variations: **Set-in-wall, Against-the-wall, Half-in / Half-out, and Panel connected** cabinets. These standards include multiple configurations of single, double, triple, and quadruple depth cabinets.

\***Note:** The contractor/dealer shall furnish at his/her own expense all material and equipment required to satisfactorily complete the installation of a Mitchell Wall Mounted System.

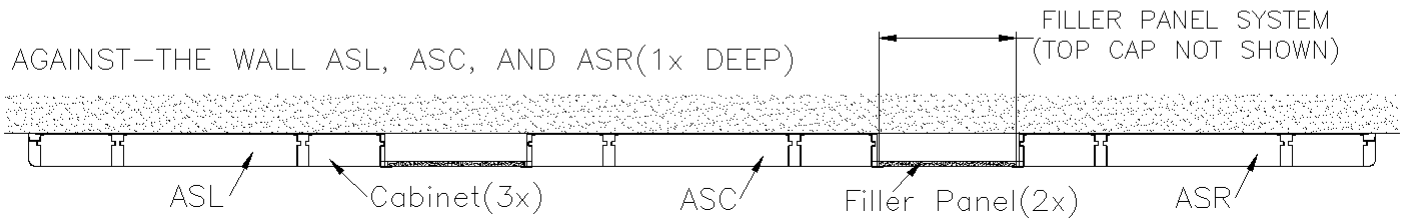
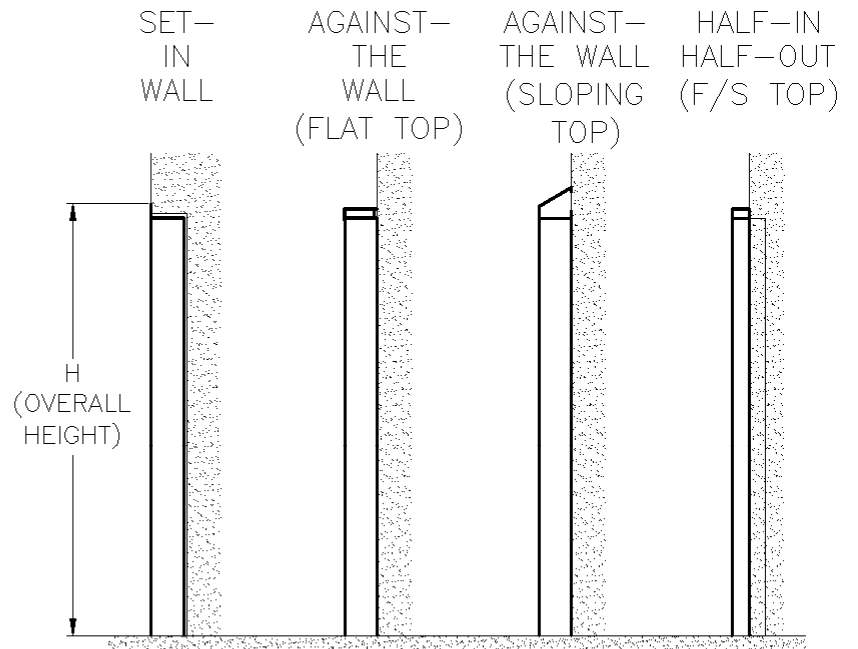
II. **MITCHELL WALL MOUNTED CABINETS**

**FIGURE A: CABINET VARIATIONS**

## PLAN VIEWS:

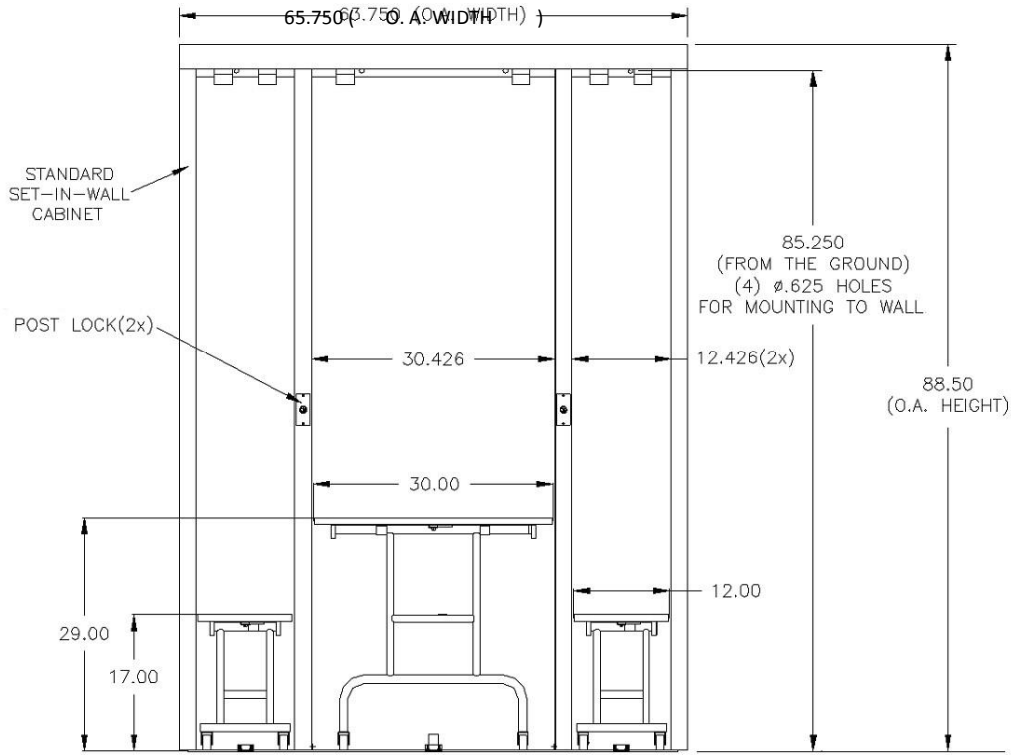


## SIDE ELEVATIONS:



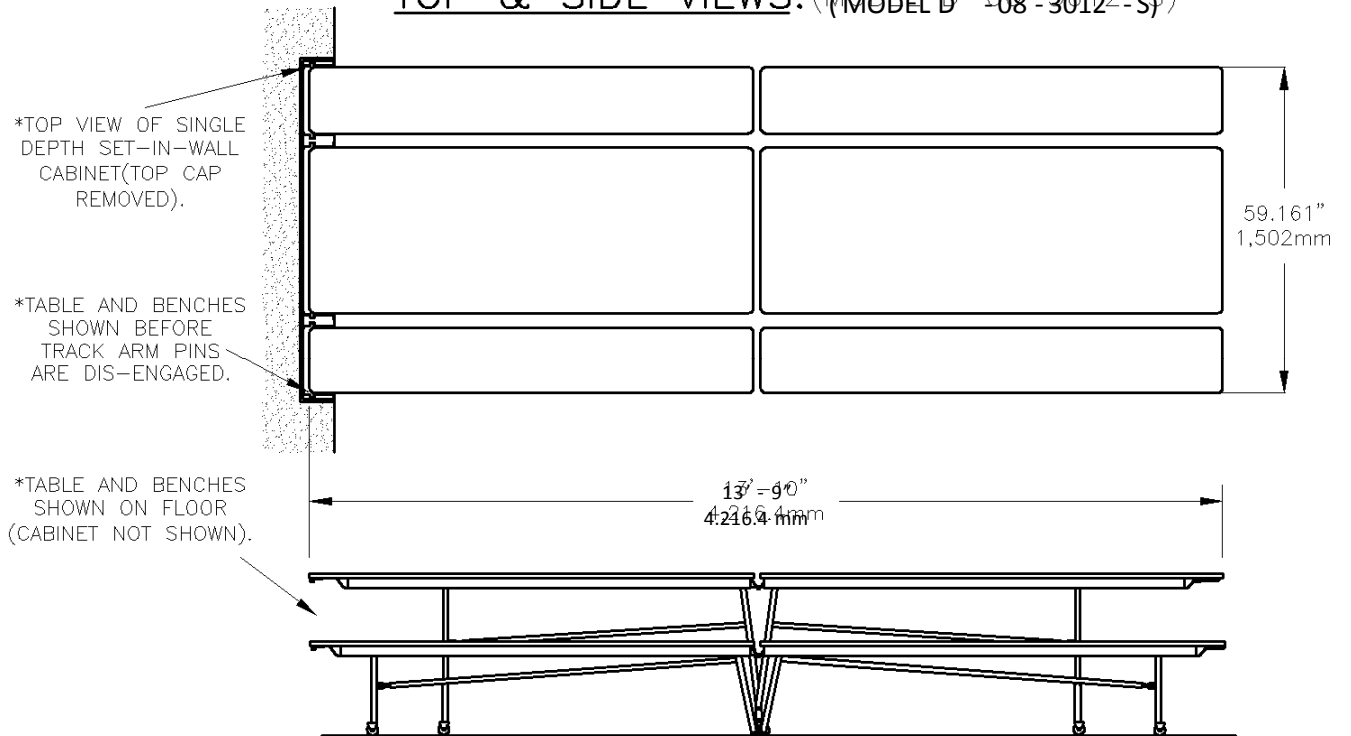
**FIGURE B:**

**FRONT ELEVATION: (MODEL D-08-3012-S)**



**FIGURE C:**

**TOP & SIDE VIEWS: (MODEL D-08-3012-S)**



A. STANDARD DIMENSIONS FOR D-08 SERIES CABINETS: (REFER TO PLAN VIEWS & ELEVATIONS ON PAGE 2 & 3).

\*For example: ‘3012’ denotes = (1) 30” wide table and (2) 12” wide benches)

1. **D-08-S** (14’ Wall Mounted single depth, set-in-wall cabinet) shall have:

D-08-S:	OVERALL DIMENSION:	MIN. ROUGH OPENING:
HEIGHT	88.50" (2248mm)	86.50" (2197mm)
SINGLE DEPTH*	5.62" (143mm)	5.87" (149mm)

STANDARD WIDTH:	OVERALL DIMENSION:	MIN. ROUGH OPENING:
D-08-3012-S	65.75" (1619mm)	62.38" (1584mm)
D-08-2812-S	63.75" (1568mm)	60.38" (1534mm)
D-08-2810-S	59.75" (1467mm)	56.38" (1432mm)

2. **D-08-A** (14’ Wall Mounted single depth, flat top cap, against-the-wall cabinet) shall have:

D-08-A:	OVERALL DIMENSION:	MIN. ROUGH OPENING:
HEIGHT	87.50" (2223mm)	none
SINGLE DEPTH*	5.75" (146mm)	none

STANDARD WIDTH:	OVERALL DIMENSION:	MIN. ROUGH OPENING:
D-08-3012-A	63.75" (1619mm)	none
D-08-2812-A	61.75" (1568mm)	none
D-08-2810-A	57.75" (1467mm)	none

3. **SLP-D-08** (14’ Wall Mounted single depth, sloping top cap, against-the-wall cabinet) shall have:

SLP-D-08:	OVERALL DIMENSION:	MIN. ROUGH OPENING:
HEIGHT	90.93" (2310mm)	none
SINGLE DEPTH*	5.75" (146mm)	none

STANDARD WIDTH:	OVERALL DIMENSION:	MIN. ROUGH OPENING:
SLP-D-08-3012	63.75" (1619mm)	none
SLP-D-08-2812	61.75" (1568mm)	none
SLP-D-08-2810	57.75" (1467mm)	none

\* Double Depth 11.375”, Triple Depth 17” and Quad Depth 22.5”

B. STANDARD STRUCTURAL MATERIALS:

1. Posts, top caps, and backing sheets shall be welded #16 gauge steel.
2. Full sills and top trim flanges shall be welded #14 gauge steel.
3. Automatic top cap locking depth guides shall be #16 gauge steel, factory welded to top cap assemblies.
4. #11 gauge x 5/8” x 1/2” steel bench stops welded in each post bench pocket.
5. Finish Steps:
  - a. Shall be iron acid phosphate treated and rinsed.

- b. Shall be phosphate coated for rust prevention.
- c. Shall be sprayed hybrid powder coated and baked.
- d. Color: Jet Black (samples upon request).

C. STANDARD MECHANICAL FEATURES:

- 1. Complete cabinet factory assembled. Posts, sill, and top cap assembly shall be securely fastened with plated #14 x 1" and #14 x 2" long indented hex head sheet metal screws and washers.
- 2. The upper half of each cabinet post surface shall have a riveted 1/8" x 1" plastic glide strip.
- 3. The backing sheets for each pocket shall be a tamper-proof assembly without any exposed mechanical fasteners.
- 4. Center Post Lock: Both center posts shall have a tamperproof solid steel locking mechanism
  - a. The post lock shall have a low profile lock housing with 1/4 turn actuation
  - b. The lock assembly shall have a 3/16" x 1" x 4-3/4" bright zinc plated steel locking cam.
  - c. There shall not be any type of locking mechanism built into the middle of either table or bench top

D. ADDITIONAL SERIES OPTIONS:

(SEE MASTER INDEX FOR STANDARD MODEL DIMENSIONS).

- 1. **D-08-13 SERIES:** 13' Wall Mounted. (seats approximately 18 grade school / 14 high school students).
- 2. **D-08-12 SERIES:** 12' Wall Mounted. (seats approximately 16 grade school / 12 high school students).
- 3. **D-08-10 SERIES:** 10' Wall Mounted. (seats approximately 14 grade school / 10 high school students).
- 4. **Table only cabinets** (all series and model variations available)

E. STANDARD SET-IN-WALL CABINET DETAILS:

- 1. Right and left end posts shall have 3" wide flanges to overlap and cover the rough wall opening.
- 2. Top caps shall have a 3-1/2" tall trim flange to overlap and cover the height of the rough opening.
- 3. (4) anchor points shall be at the inside top of cabinet, just above the backing sheet panels.
- 4. (4) anchor points shall be in the sill (typically anchored to a concrete floor).

F. STANDARD AGAINST-THE-WALL CABINET DETAILS:

- 1. Cabinets shall be anchored to wall and floor as per section I-F2 & I-F3 (local codes may determine specific install fasteners).
- 2. All sloping against-the-wall cabinets shall have a standard 30° sloping top cap.
- 3. All against-the-wall cabinets shall have a standard 1" radius 'bull nose' corner detail on each left and right end post.

G. ASC, ASR, AND ASL PANEL-CONNECTED CABINET DETAILS: (CONTACT FACTORY FOR TYPICAL CUSTOM DESIGN SUGGESTIONS)

- 1. All series against-the-wall cabinets apply.
- 2. 'ASC' designates a centrally located cabinet with filler panels on each side.
- 3. 'ASL' and 'ASR' designates the end cabinets on either the right or left of one or more 'ASC' cabinets with filler panels in between units.
- 4. Standard top cap options:
  - a. 'A' Flat top with flat steel filler caps.
  - b. 'SLP' Standard 30° sloping top cap with sloping steel filler caps.
- 5. Filler panels: (USE OF MITCHELL PANELS - STANDARD, BUT OPTIONAL – CONTACT FACTORY).
  - a. Shall have a 3/4" thick resin wood core – not to exceed 87.00" (2210mm) H x 44.00" (1118mm) W.
  - b. Shall have a plastic laminate (Wilsonart Colors) on side facing out and backing material facing in.
  - c. Shall have a stainless steel channel at bottom of each panel to protect laminate.
  - d. Shall be captured between ASC, ASL, and ASR cabinets without mechanical fasteners.

I. SPECIAL CABINET CONFIGURATIONS:

(CONTACT FACTORY FOR TYPICAL CUSTOM DESIGN SUGGESTIONS)

- 1. Half-in / half-out cabinets.

2. 'ADA' Special cabinet to accommodate wheelchair access.

### III. MITCHELL WALL MOUNTED TABLES AND BENCHES: (4 STANDARD SERIES) (SEE MASTER INDEX FOR STANDARD MODEL DIMENSIONS AND SEATING CAPACITIES)

#### A. STANDARD STRUCTURAL MATERIALS (TABLES AND BENCHES):

1. Tops shall be ¾" thick particle board core - 45 PCF (721 kg/m<sup>3</sup>), with a custom laminate top surface and a backing balance sheet.
  - a. O.A. thickness of tops shall be 13/16" (30mm) ± 0.025".
  - b. Edges of tops shall be sealed with Mitchell's **DuraEdge®** or **Poly Edge**.
    - c. **DuraEdge®** shall be:
      - 1) Black thermoplastic polyvinyl chloride UV stable.
      - 2) Smooth texture.
      - 3) Machine applied and nailed to core material at 6" centers on perimeter of top.
      - 4) A tight sanitary seal.
      - 5) Resilient upon impact.
      - 6) Easily repaired on site.
    - d. **Poly Edge** shall be:
      - 1) Black sprayed-on Polyurea.
      - 2) Textured surface.
      - 3) Sanitary seal.
      - 4) Resilient upon impact.
  - c. **DuraEdge®** shall be:
    - 1) Black thermoplastic polyvinyl chloride UV stable.
    - 2) Smooth texture.
    - 3) Machine applied and nailed to core material at 6" centers on perimeter of top.
    - 4) A tight sanitary seal.
    - 5) Resilient upon impact.
    - 6) Easily repaired on site.
2. Mitchell Aprons: Steel understructure that supports table and bench tops shall be:
  - a. #16 gauge cold-rolled steel – (ASTM A513).
  - b. U-shaped profile – 1¾" (44mm) high.
  - c. Welded uni-structure with hinges, leg pivot locators, gussets, and rounded end caps.
  - d. Powder coated jet-black finish.
  - e. Fastened to tops at 6" (152mm) intervals with fully threaded and plated hex head screws.
3. Table and bench legs shall be:
  - a. Robotically welded with #14 and #16 gauge tubular steel.
  - b. Powder coated jet-black finish.
  - c. Equipped with non-marring 2½" (54mm) D x 1" (25.4mm) W black rubber (some swivel required) wheels.
  - d. Attached to tops' understructure without mechanical fasteners.

#### B. STANDARD MITCHELL TABLES:

1. All standard Mitchell Wall Mounted Tables shall have:
  - a. (2) standard height selections. 1) 29" tall (737mm).
    - 2) 27" tall (686mm).
  - b. (2) standard width selections. 1) 30" wide (762mm).
    - 2) 28" wide (711mm).
  - c. Automatic down-lock for anti-jackknife.
  - d. Torsion bar spring lift assist.
  - e. Automatic locking engagement feature to cabinet top cap.
  - f. Track arm pins lock to cabinets side wall channels.
  - g. Leaf to leaf storage lock, locking two halves of the table to one another.

#### C. STANDARD MITCHELL BENCHES:

1. All standard Mitchell Wall Mounted Benches shall have:
  - a. (2) standard height selections. 1) 17" tall (432mm).
    - 2) 15" tall (381mm).
  - b. (2) standard width selections - automatic down-lock for anti-jackknife.
  - c. Gas tube lift assist.
  - d. Automatic locking engagement feature to cabinet top cap.
  - e. Track arm pins lock to cabinets side wall channels.

f. Leaf to leaf storage lock, locking two halves of the bench to one another

Revision # 13  
Feb '10