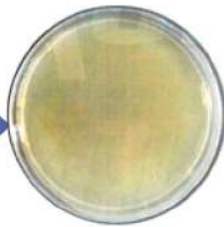
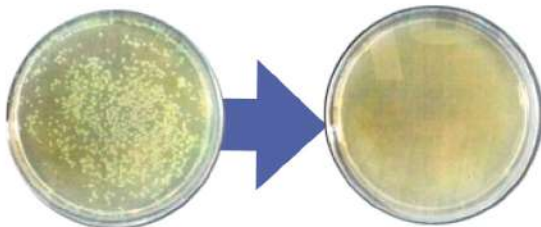


vray

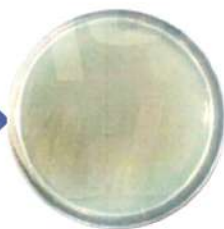
Before

After



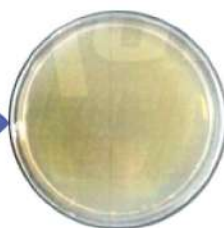
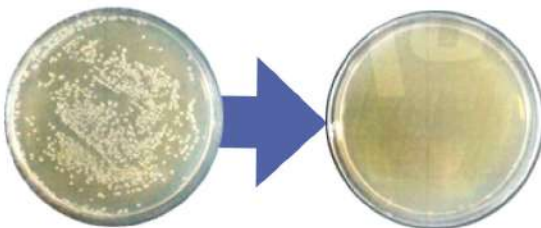
Pseudomonas Aeruginosa

Pseudomonas aeruginosa is a common bacterium that is associated with numerous serious illnesses, including chronic infections in cystic fibrosis patients.



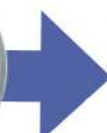
Staphylococcus Aureus

The bacterium *Staphylococcus aureus* is a common cause of skin infections, respiratory infections and food poisoning.



Klebsiella Pneumoniae

Found to be a major cause of pneumonia in the late 19th Century, *Streptococcus pneumonia* can cause other infections, including bronchitis and meningitis.



MRSA

Commonly occurring in hospital settings, MRSA is a strain of staph. MRSA is spread by contact, whether with people or objects contaminated with the bacteria. Extremely contagious, MRSA evolves to become resistant to antibiotics.

TESTING PROVIDED BY **kCL**