



Elite Pro Series

Portable Hot Water Handwashing Sink

WITH ITS STAINLESS STEEL CABINET AND millwork doors, our **Elite Pro 3** stands out from the competition in areas of quality and affordability. Standard door colors include solid white, solid black or white doors with black edge trim. The **Elite Pro 3** includes a stainless steel splash guard with M-fold paper towel dispenser, triple stainless steel basin, soap dispenser and ADA compliant faucet handles.



ELITE PRO 3

Elite Pro 3



Stainless Countertop and Splash Guard / Triple Stainless Basin

Indoor or Covered Applications

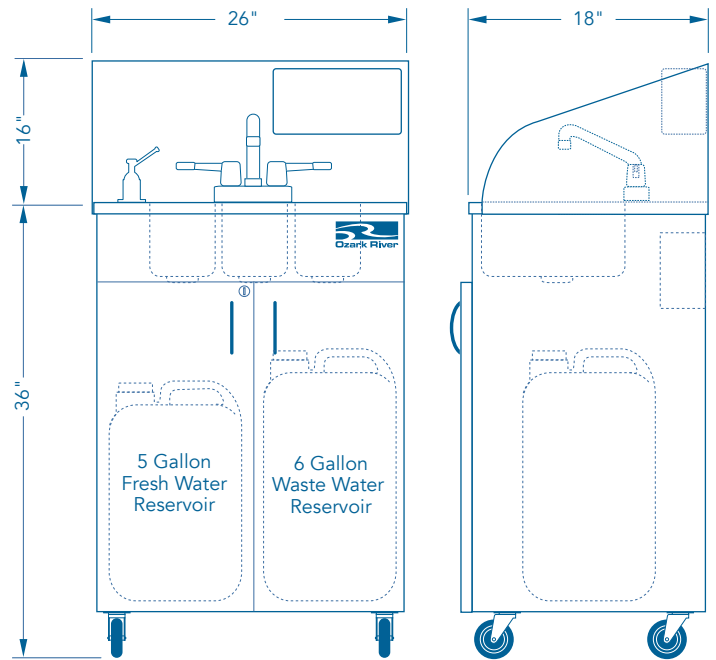
- Food Vendors
- Hospitality
- Patio Food and Beverage Serving
- Personal Covered Decks and Garages
- Catering Events
- Mobile Trailers
- County Fairs
- Covered Playgrounds
- Waitress Stations
- Trade Shows, etc.

Model		List Price
Triple Compartment Basin		
ESPRWK-SS-SS3N	White Doors With Black Trim	\$3,407 ⁹⁵
ESPRWW-SS-SS3N	White Doors With White Trim	
ESPRKK-SS-SS3N	Black Doors With Black Trim	

Specifications	
Model Name	Elite Pro 3
NSF Certified	Yes
SACERS Rating	12, 3.4, 5.1, 5.2
Electrical Requirements	110V, 20A Dedicated Outlet and Breaker
Product Dimensions	26" W x 18" D x 52" H
Product Weight	108 lbs.
On-Demand Hot Water	Approx. 40°F Above Fresh Water Temperature
Fresh Water Tank	5 Gallon Capacity, FDA Approval
Waste Water Tank	6 Gallon Capacity, FDA Approval
Approx Handwashings	42 qty. 15-Second Handwashings
GPM	0.50
Basin Style	Triple
Basin Material	Stainless Steel
Basin Dimensions	6.25" W x 12.15" L x 5" D (each basin)
Faucet Style	D-Spout, ADA Compliant Handles
Countertop Material	Stainless Steel
Cabinet Material	Stainless Steel
Cabinet Wheels	Standard 3" Front Locking/Swivel Casters
Door Colors	White/Black, White/White, Black/Black
Door Material	Phthalate, Lead Free Millwork / PVC Edging
Door Lock	Keyless
Towel Dispenser	ABS Material, M-Fold Towels
Soap Dispenser	Liquid Only, Countertop Mount
Warranty	2 Year (see warranty for details)

Minimum Operating Requirements	
Each sink must use a grounded, dedicated 110V, 20A circuit breaker	
Sinks must be used on a dry, level indoor surface	
Extension cord must be 12/3, rated at 20A or higher	
Water must meet EPA standards (PH between 7.0 and 9.0)	

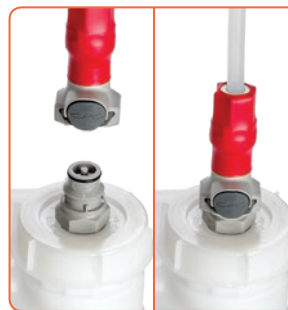
Designs, availability, colors, specifications, dimensions and models are subject to change without notice.
©2018 Integrity Distribution LLC · Date: 03/06/2018



5" Xtra-Duty Caster Upgrade



Quick Connect Tank



IMPORTANT:

Consult with your state and local environmental health official to confirm usage of portable sinks in place of plumbing.

OzarkRiver.com
Toll Free: 1-866-663-1982
Office: 615-203-3078
Greater Nashville Area



Handwashing Compliance

Ozark River is the Standard

NSF® CERTIFICATION

NSF® Certification is a key factor separating Ozark River Portable Sinks® from its competitors. NSF® is the most recognized sanitation standard in many industries. Certification is critical to help ensure Ozark River Portable Sinks® complies with most state and local handwashing codes.

SACERS RATING

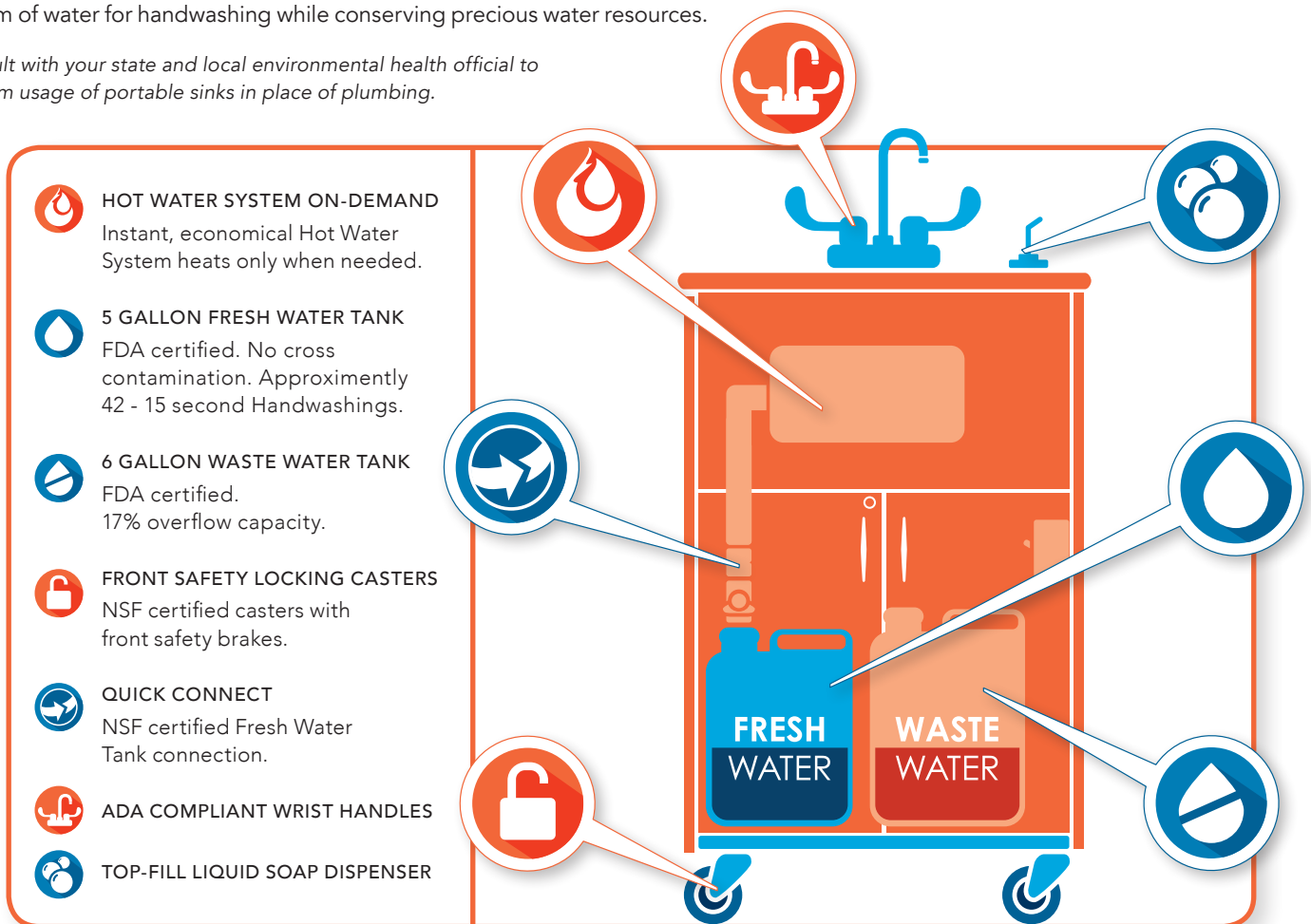
SACERS provides an easy to use resource for defining high-quality care and assessing levels of quality in child care programs. Ozark River Portable Sinks directly affect SACERS, increasing the rating.

SACERS Rating: 12 - 3.4 - 5.1 - 5.2

ENERGY AND WATER SAVINGS

Our reliable, instant hot water system uses a minimal amount of energy to heat the water. No preheating of water is required. Sinks also dispense a sensible 1/2 gallon of water per minute (GPM), providing a perfect, economical stream of water for handwashing while conserving precious water resources.

Consult with your state and local environmental health official to confirm usage of portable sinks in place of plumbing.



HOT WATER SYSTEM ON-DEMAND
Instant, economical Hot Water System heats only when needed.

5 GALLON FRESH WATER TANK
FDA certified. No cross contamination. Approximately 42 - 15 second Handwashings.

6 GALLON WASTE WATER TANK
FDA certified.
17% overflow capacity.

FRONT SAFETY LOCKING CASTERS
NSF certified casters with front safety brakes.

QUICK CONNECT
NSF certified Fresh Water Tank connection.

ADA COMPLIANT WRIST HANDLES

TOP-FILL LIQUID SOAP DISPENSER

OzarkRiver.com
Greater Nashville Area
Toll Free: 1.866.663.1982
Office: 1.615.203.3078

