



Elite LS Series

Portable Hot Water Handwashing Sink

WITH ITS STAINLESS STEEL CABINET AND MILL-work doors, our **Elite Series** stands out from the competition in areas of quality and affordability. Standard door colors include white doors with black edge trim, solid white or solid black. This model includes a single stainless steel basin, soap dispenser and ADA compliant faucet handles.



ELITE LS

Elite LS 1



Stainless Countertop / Single Stainless Basin

Use and Applications

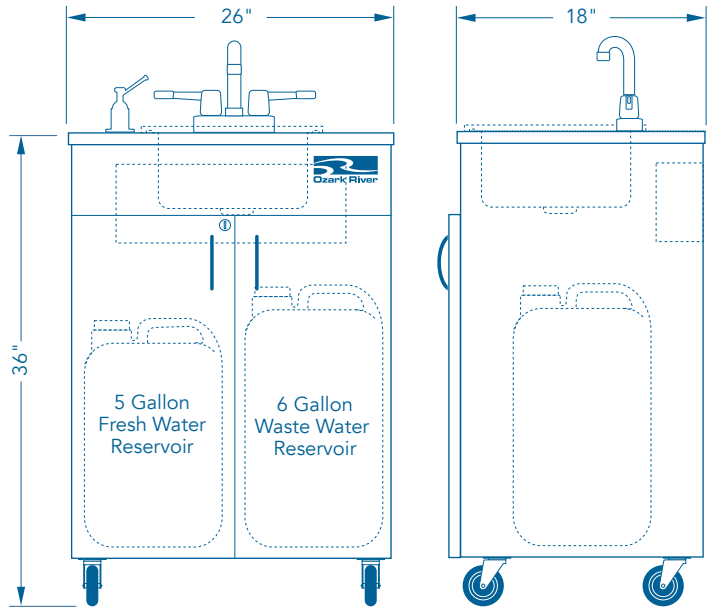
- Outdoor Food Vendors
- Hospitality
- Patio Food and Beverage Serving
- Personal Decks and Garages
- Catering Events
- Mobile Trailers
- County Fairs
- Outdoor Classrooms and Playgrounds
- Waitress Stations
- Trade Shows, etc.

Model		List Price
Single Compartment Basin		
ESLSWK-SS-SS1N	White Doors With Black Trim	\$2,438 ^{MS}
ESLSWW-SS-SS1N	White Doors With White Trim	
ESLSKK-SS-SS1N	Black Doors With Black Trim	

Specifications	
Model Name	Elite LS 1
NSF Certified	Yes
SACERS Rating	12, 3.4, 5.1, 5.2
Electrical Requirements	110V, 20A Dedicated Outlet and Breaker
Product Dimensions	26" W x 18" D x 36" H
Product Weight	88 lbs.
On-Demand Hot Water	Approx. 40°F Above Fresh Water Temperature
Fresh Water Tank	5 Gallon Capacity, FDA Approval
Waste Water Tank	6 Gallon Capacity, FDA Approval
Approx Handwashings	42 qty. 15-Second Handwashings
GPM	0.50
Basin Style	Single
Basin Material	Stainless Steel
Basin Dimensions	12" W x 10" L x 5.75" D
Faucet Style	Goose Neck Spout, ADA Compliant Handles
Countertop Material	Stainless Steel
Cabinet Material	Stainless Steel
Cabinet Wheels	Standard 3" Front Locking/Swivel Casters
Door Colors	White/Black, White/White, Black/Black
Door Material	Phthalate, Lead Free Millwork / PVC Edging
Door Lock	Keyless
Soap Dispenser	Liquid Only, Countertop Mount
Warranty	2 Year (see warranty for details)

Minimum Operating Requirements	
Each sink must use a grounded, dedicated 110V, 20A circuit breaker	
Sinks must be used on a dry, level indoor surface	
Extension cord must be 12/3, rated at 20A or higher	
Water must meet EPA standards (PH between 7.0 and 9.0)	

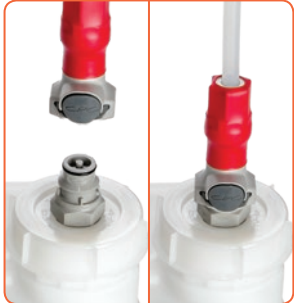
Designs, availability, colors, specifications, dimensions and models are subject to change without notice. ©2018 Integrity Distribution LLC · Date: 03/06/2018



5" Xtra-Duty Caster Upgrade



Quick Connect Tank



IMPORTANT: Consult with your state and local environmental health official to confirm usage of portable sinks in place of plumbing.

Handwashing Compliance

Ozark River is the Standard

NSF® CERTIFICATION

NSF® Certification is a key factor separating Ozark River Portable Sinks® from its competitors. NSF® is the most recognized sanitation standard in many industries. Certification is critical to help ensure Ozark River Portable Sinks® complies with most state and local handwashing codes.

SACERS RATING

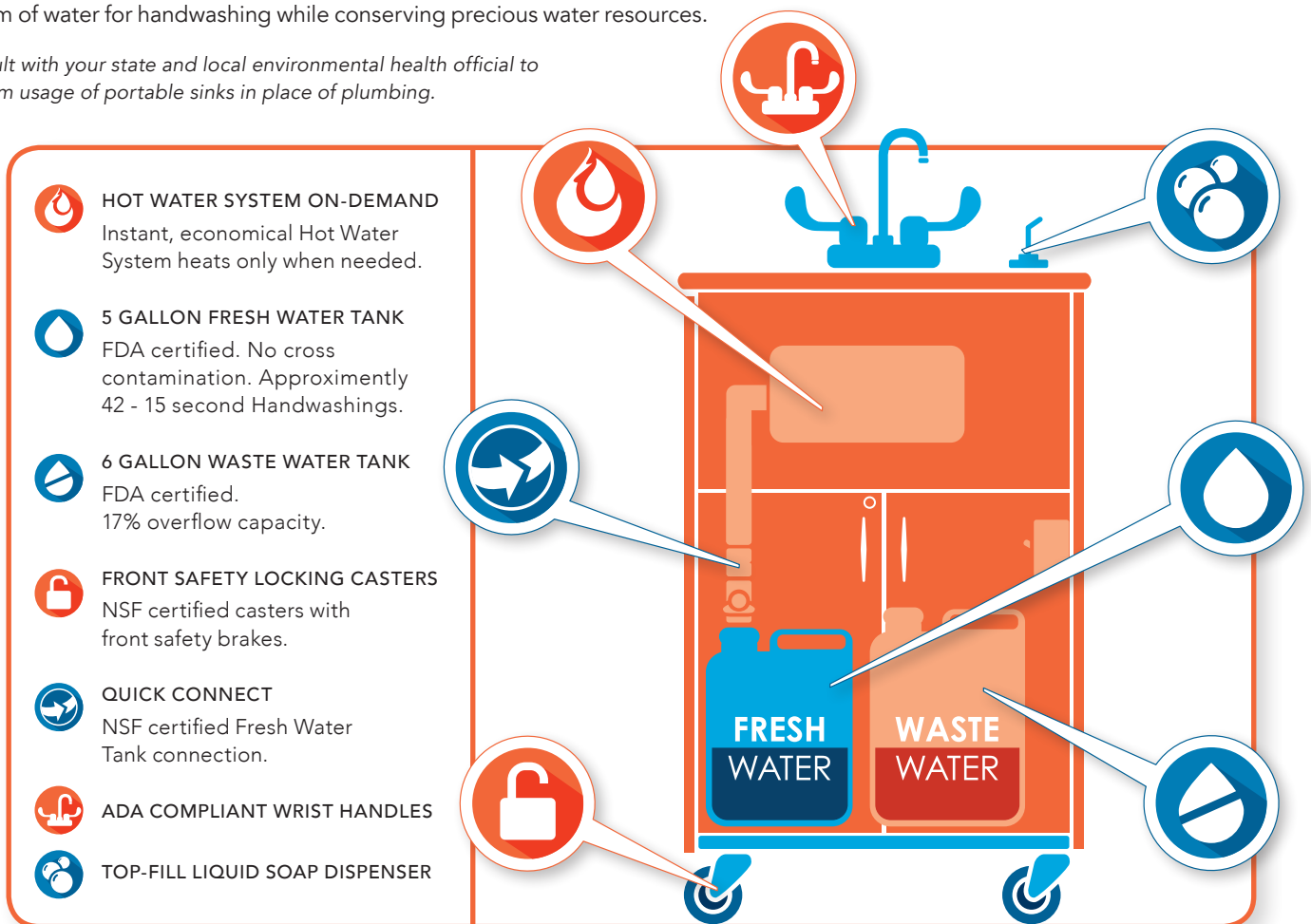
SACERS provides an easy to use resource for defining high-quality care and assessing levels of quality in child care programs. Ozark River Portable Sinks directly affect SACERS, increasing the rating.

SACERS Rating: 12 - 3.4 - 5.1 - 5.2

ENERGY AND WATER SAVINGS

Our reliable, instant hot water system uses a minimal amount of energy to heat the water. No preheating of water is required. Sinks also dispense a sensible 1/2 gallon of water per minute (GPM), providing a perfect, economical stream of water for handwashing while conserving precious water resources.

Consult with your state and local environmental health official to confirm usage of portable sinks in place of plumbing.



OzarkRiver.com
Greater Nashville Area
Toll Free: 1.866.663.1982
Office: 1.615.203.3078

