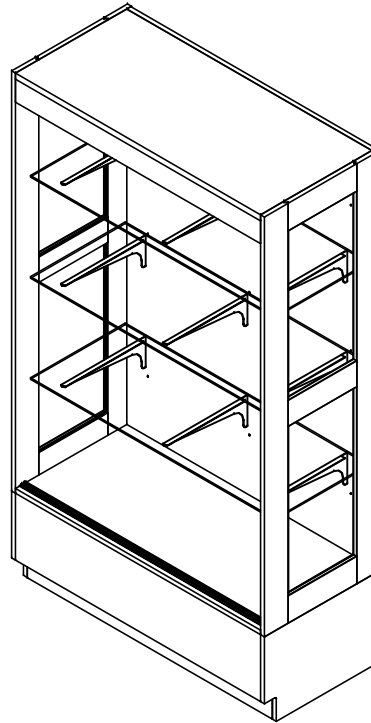


# DISPLAY CABINET

380-4822 (OAK OR MAPLE)  
ASSEMBLY INSTRUCTIONS



NOTE:

1. MODEL VIEWS MAY NOT REPRESENT EXACT MODEL PURCHASED

DWN BY:	EMK	DWN DATE:	4/25/13
APR BY:		DATE APR:	
APR BY:		DATE APR:	

UNLESS OTHERWISE SPECIFIED  
DIMENSION ARE IN INCHES  
CABINET SQUARENESS ± .0625  
FRACTIONAL VALUES ± 1/32"  
- ALL VALUES ± OVERALL -



300 South Krueger Street  
Suring, WI 54174  
diversifiedwoodcrafts.com

TITLE:  
PREMIER DISPLAY CABINET  
ASSEMBLY INSTRUCTIONS

REV.	DESCRIPTION	DATE	NAME	ECN NO.
A	CREATED ASSEMBLY INSTRUCTIONS	4/25/13	EMK	-
REVISION LEVEL				

THIS DRAWING IS THE SOLE PROPERTY OF  
DIVERSIFIED WOOD CRAFTS. IT MAY NOT  
BE ALTERED OR CHANGED WITHOUT  
PERMISSION

DRAWING NUMBER:	SCALE:	SHEET:	REVISION:
380-4822	NTS	1 OF 4	REV A

## TOOLS REQUIRED

CONTACT CEMENT

SCREW DRIVER

## ASSEMBLY COMPONENTS

ITEMS INCLUDED	PART #	PART DESCRIPTION	QTY
GLASS DOOR	244856DWI	DOOR,ASSYGLASS,SLIDING,46.5WX67.25 H	1
GLASS SHELF	247057	GLASS,SHELF,TEMP.,.25X18.00X46.312	3
RUBBER GROMMETS	247071	GROMMETS,RUBBER,PUSH IN,¼"ID	27
LIGHT BAR	247617	LIGHT BAR,FLORESCENT 21 INCH	1
SHELF BRACKET	100124-16	SHELF BRACKET,LEFT HAND-16	9
CORNER BASE ASSEMBLY	206513	CORNER,BASE,ASSY,SST,2CORNERS W/ SCREW	1
RUBBER BASE MOLDING	100283	RUBBER BASE MOLDING (SOLD BY FOOT)	7.66
SCREWS-BASE	100378	SCREW,#8 X 1¼"	6

NOTE:

1.

DWN BY:	EMK	DWN DATE:	4/25/13
APR BY:		DATE APR:	
APR BY:		DATE APR:	

UNLESS OTHERWISE SPECIFIED  
DIMENSION ARE IN INCHES  
CABINET SQUARENESS ± .0625  
FRACTIONAL VALUES ± 1/32"  
- ALL VALUES ± OVERALL -



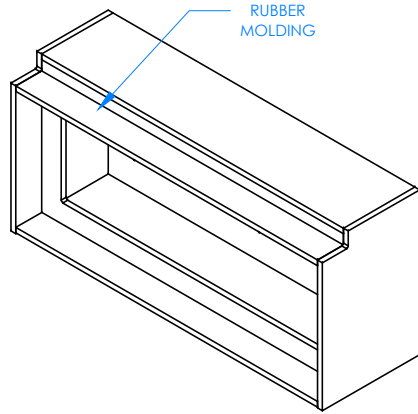
300 South Krueger Street  
Suring, WI 54174  
diversifiedwoodcrafts.com

TITLE:  
PREMIER DISPLAY CABINET  
TOOLS AND ASSEMBLY COMPONENTS

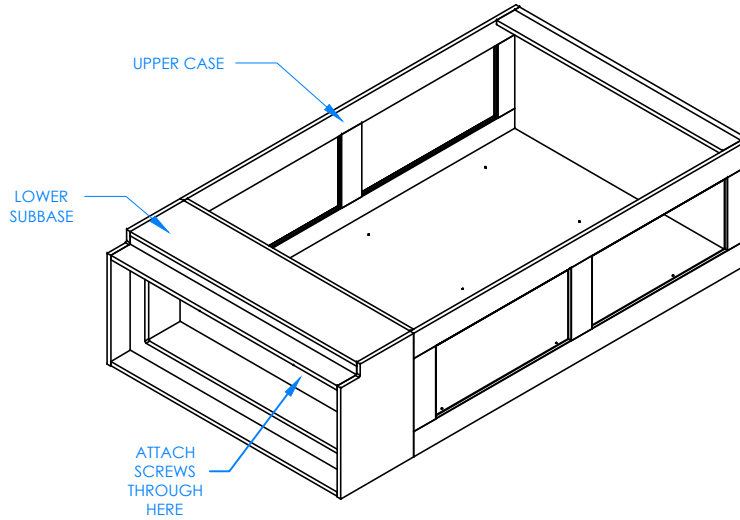
REV.	DESCRIPTION	DATE	NAME	ECH NO.
A	CREATED ASSEMBLY INSTRUCTIONS	4/25/13	EMK	-
				REVISION LEVEL

THIS DRAWING IS THE SOLE PROPERTY OF  
DIVERSIFIED WOOD CRAFTS. IT MAY NOT  
BE ALTERED OR CHANGED WITHOUT  
PERMISSION

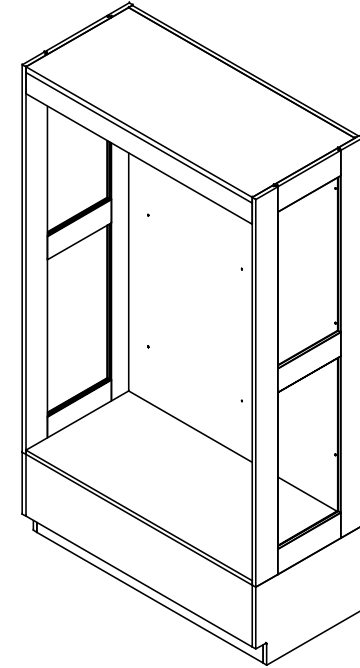
DRAWING NUMBER:	SCALE:	SHEET:	REVISION:
380-4822	NTS	2 OF 4	REV A



**STEP 1:**  
 ATTACH RUBBER MOLDING TO TOEKICK AREA ON LOWER BASE AND POSITION THE STAINLESS STEEL CORNERS ON THE FRONT TWO BOTTOM CORNERS OF THE CABINET AND ATTACH WITH SCREWS PROVIDED.



**STEP 2:**  
 ATTACH LOWER SUBBASE TO UPPER CASE USING THE SCREWS PROVIDED.



**STEP 3:**  
 CAREFULLY TIP UPRIGHT, LEVEL CABINET, AND SECURE TO WALL.

**NOTE:**

1. LOCKING, CABINET STANDARDS, UNFRAMED SLIDING GLASS DOORS, AND LIGHT BAR NOT SHOWN.

DWN BY:	EMR	DWN DATE:	4/25/13
APR BY:		DATE APR:	
APR BY:		DATE APR:	

UNLESS OTHERWISE SPECIFIED  
 DIMENSION ARE IN INCHES  
 CABINET SQUARENESS ± .0625  
 FRACTIONAL VALUES ± 1/32"  
 - ALL VALUES ± OVERALL -



300 South Krueger Street  
 Suring, WI 54174  
 diversifiedwoodcrafts.com

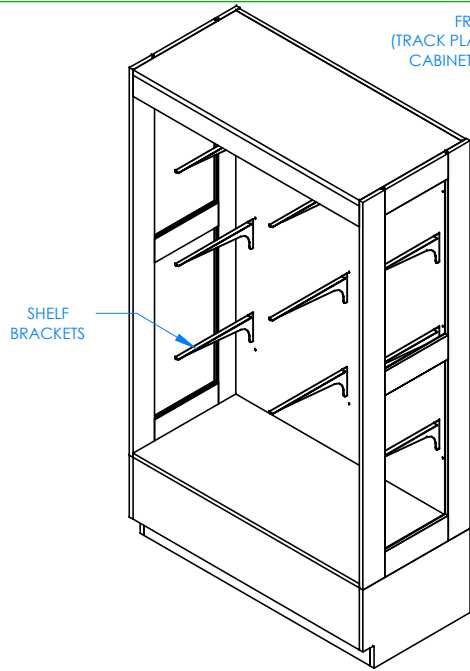
TITLE:  
**PREMIER DISPLAY CABINET  
 ASSEMBLY INSTRUCTIONS**

REV.	DESCRIPTION	DATE	NAME	ECH NO.
A	CREATED ASSEMBLY INSTRUCTIONS	4/25/13	EMK	-
REVISION LEVEL				

THIS DRAWING IS THE SOLE PROPERTY OF  
 DIVERSIFIED WOOD CRAFTS. IT MAY NOT  
 BE ALTERED OR CHANGED WITHOUT  
 PERMISSION

DRAWING NUMBER:  
**380-4822**

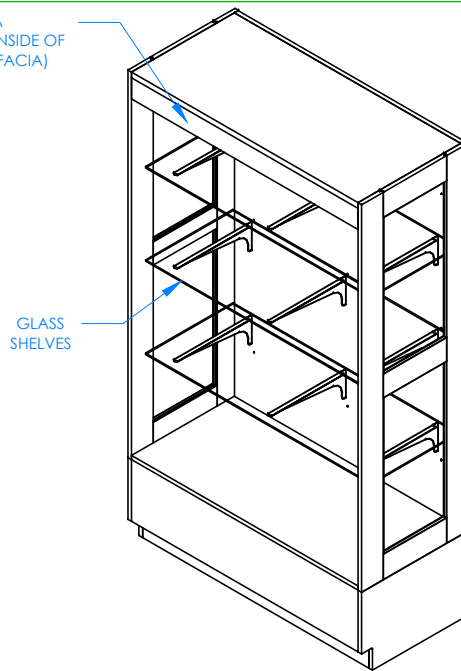
SCALE:	SHEET:	REVISION:
NTS	3 OF 4	REV A



STEP 4:

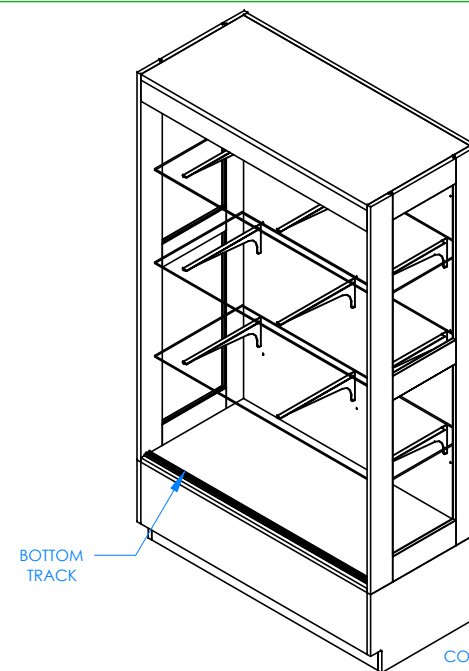
INSERT SHELF BRACKETS IN DESIRED LOCATIONS MAKING SURE THE SHELF IS LEVEL.

FRONT FACIA  
(TRACK PLACED ON INSIDE OF  
CABINET AGAINST FACIA)



STEP 5:

TO ATTACH UPPER TRACK, PLACE TRACK INSIDE CABINET AGAINST FRONT FACIA (TOP OF CABINET). PREDRILLED HOLES TOWARDS INSIDE OF CABINET. ATTACH USING SCREWS PROVIDED. ATTACH RUBBER GROMMETS TO BRACKETS AND ADD SHELVES.



STEP 6:

TO ATTACH BOTTOM TRACK, MEASURE  $1\frac{3}{16}$ " FROM BOTTOM EDGE OF CABINET. ATTACH WITH SCREWS PROVIDED. ATTACH HARDWARE TO DOORS, SLIDE DOORS INTO PLACE. ADD LIGHT BAR IN DESIRED LOCATION.

COMPLETE UNIT SHOWN

NOTE:

1. LOCKING, CABINET STANDARDS, UNFRAMED SLIDING GLASS DOORS, AND LIGHT BAR NOT SHOWN.

DWN BY:	EMR	DWN DATE:	4/25/13
APR BY:		DATE APR:	
APR BY:		DATE APR:	

UNLESS OTHERWISE SPECIFIED  
DIMENSION ARE IN INCHES  
CABINET SQUARENESS ± .0625  
FRACTIONAL VALUES ± 1/32"  
- ALL VALUES ± OVERALL -



300 South Krueger Street  
Suring, WI 54174  
diversifiedwoodcrafts.com

TITLE:  
PREMIER DISPLAY CABINET  
ASSEMBLY INSTRUCTIONS

REV.	DESCRIPTION	DATE	NAME	ECH NO.
A	CREATED ASSEMBLY INSTRUCTIONS	4/25/13	EMK	-

REVISION LEVEL

THIS DRAWING IS THE SOLE PROPERTY OF  
DIVERSIFIED WOOD CRAFTS. IT MAY NOT  
BE ALTERED OR CHANGED WITHOUT  
PERMISSION

DRAWING NUMBER:

380-4822

SCALE:	SHEET:	REVISION:
NTS	4 OF 4	REV A