



# Premier Series

## Portable Hot Water Handwashing Sink

ADD ELEGANCE TO YOUR PORTABLE SINK with a well-defined cherry, maple or mahogany natural wood-grain finish, or enhance your event with our solid color options. Elegance and durability is exactly what you will receive with any of our standard cabinet finishes available on the **Premier Series**. Our flagship product line, and most popular Ozark River Portable Sink®, features a convenient cabinet size that is perfectly suited for restaurants, food/beverage serving, hospitality, spas, classrooms, medical and health rooms and many other commercial applications.

The Premier S1 features a millwork cabinet, stainless steel countertop, and a single stainless steel basins. All our Premier models are NSF certified and include a stainless steel bottom.



# PREMIER S1



# Premier S1

Stainless Countertop / Single Stainless Basin

## Use and Applications

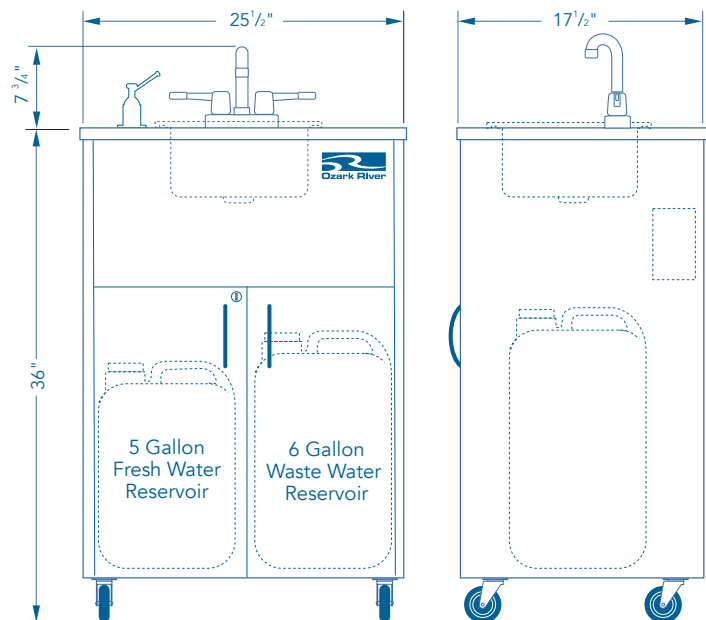
- Child Care Facilities
- Classrooms and Schools
- Care Homes
- Food and Beverage Serving or Demonstration
- Waitress Stations
- Catering Events
- Cafeterias
- Mobile Trailers
- Trade Shows, etc. Medical Exam Rooms
- Lab and Testing Facilities

Model	Color Options	List Price
<b>Single Compartment Basin</b>		
ADSTK-SS-SS1N	Black	\$2,285 <sup>25</sup>
ADSTC-SS-SS1N	Cherry	
ADSTH-SS-SS1N	Mahogany	
ADSTM-SS-SS1N	Maple	

Specifications	
Model Name	Premier S1
NSF Certified	Yes
SACERS Rating	12, 3.4, 5.1, 5.2
Electrical Requirements	110V, 20A Dedicated Outlet and Breaker
Product Dimensions	25.50" W x 17.50" D x 36" H
Product Weight	88 lbs.
On-Demand Hot Water	Approx. 40°F Above Fresh Water Temperature
Fresh Water Tank	5 Gallon Capacity, FDA Approval
Waste Water Tank	6 Gallon Capacity, FDA Approval
Approx Handwashings	42 qty. 15-Second Handwashings
GPM	0.50
Basin Style	Single
Basin Material	Stainless Steel
Basin Dimensions	12" W x 10" L x 5.75" D
Faucet Style	Goose Neck Spout, ADA Compliant Handles
Countertop Material	Stainless Steel
Cabinet Material	Phthalate, Lead Free Millwork
Cabinet Wheels	Standard 3" Front Locking/Swivel Casters
Door Lock	Keyless
Soap Dispenser	Liquid Only, Countertop Mount
Warranty	2 Year (see warranty for details)

Minimum Operating Requirements	
Each sink must use a grounded, dedicated 110V, 20A circuit breaker	
Sinks must be used on a dry, level indoor surface	
Extension cord must be 12/3, rated at 20A or higher	
Water must meet EPA standards (PH between 7.0 and 9.0)	

Designs, availability, colors, specifications, dimensions and models are subject to change without notice. ©2018 Integrity Distribution LLC · Date: 03/06/2018



5" Xtra-Duty Caster Upgrade



Quick Connect Tank



### IMPORTANT:

Consult with your state and local environmental health official to confirm usage of portable sinks in place of plumbing.

OzarkRiver.com  
 Toll Free: 1-866-663-1982  
 Office: 615-203-3078  
 Greater Nashville Area



# Handwashing Compliance

## Ozark River is the Standard

### NSF® CERTIFICATION

NSF® Certification is a key factor separating Ozark River Portable Sinks® from its competitors. NSF® is the most recognized sanitation standard in many industries. Certification is critical to help ensure Ozark River Portable Sinks® complies with most state and local handwashing codes.

### SACERS RATING

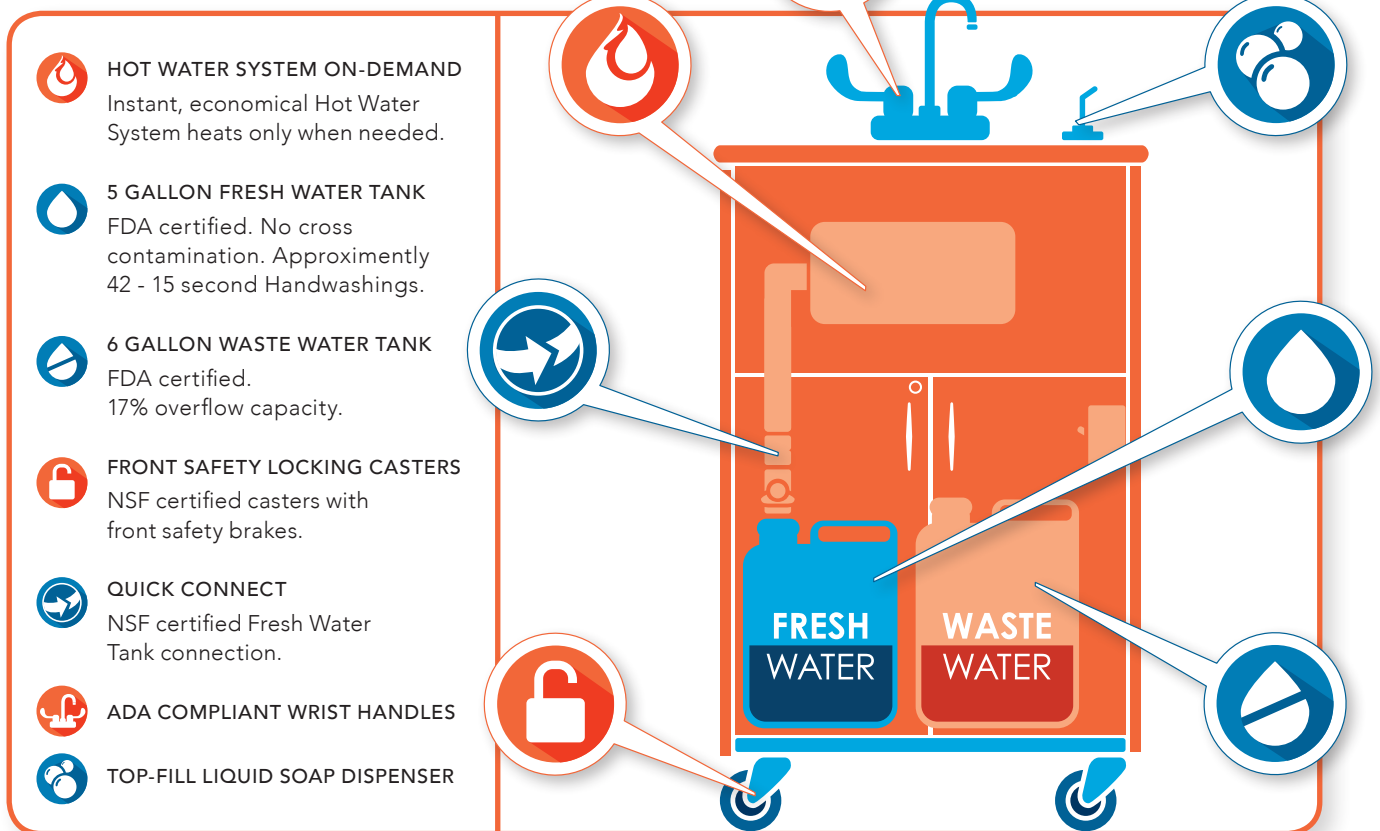
SACERS provides an easy to use resource for defining high-quality care and assessing levels of quality in child care programs. Ozark River Portable Sinks directly affect SACERS, increasing the rating.

**SACERS Rating: 12 - 3.4 - 5.1 - 5.2**

### ENERGY AND WATER SAVINGS

Our reliable, instant hot water system uses a minimal amount of energy to heat the water. No preheating of water is required. Sinks also dispense a sensible 1/2 gallon of water per minute (GPM), providing a perfect, economical stream of water for handwashing while conserving precious water resources.

*Consult with your state and local environmental health official to confirm usage of portable sinks in place of plumbing.*



OzarkRiver.com  
Greater Nashville Area  
Toll Free: 1.866.663.1982  
Office: 1.615.203.3078

