



Premier Series

Portable Hot Water Handwashing Sink

ADD ELEGANCE TO YOUR PORTABLE SINK with a well-defined cherry, maple or mahogany natural wood-grain finish, or enhance your event with our solid color options. Elegance and durability is exactly what you will receive with any of our standard cabinet finishes available on the **Premier Series**. Our flagship product line, and most popular Ozark River Portable Sink®, features a convenient cabinet size that is perfectly suited for restaurants, food/beverage serving, hospitality, spas, classrooms, medical and health rooms and many other commercial applications.

The Premier 1 features a millwork cabinet, millwork countertop, and a single stainless steel basins. All our Premier models are NSF certified and include a stainless steel bottom.



PREMIER 1

Premier 1

Millwork Countertop / Single Stainless Basin

Use and Applications

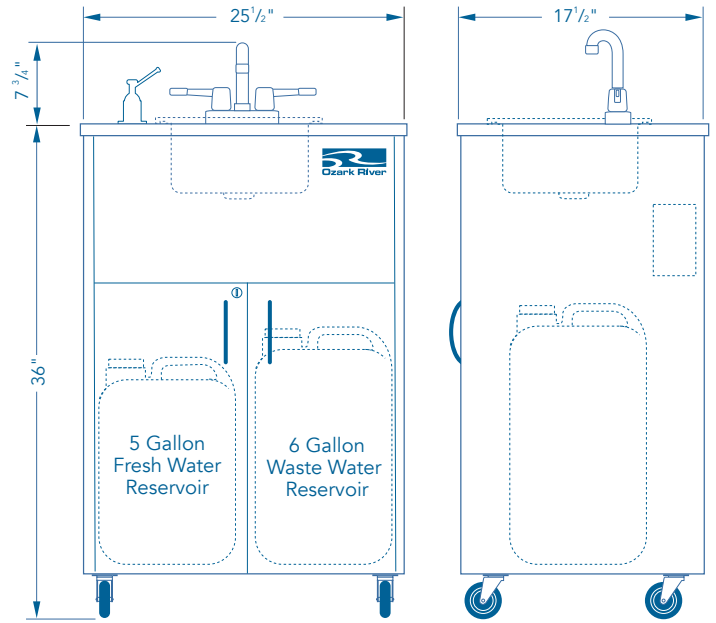
- Child Care Facilities
- Classrooms and Schools
- Care Homes
- Food and Beverage Serving or Demonstration
- Waitress Stations
- Catering Events
- Cafeterias
- Mobile Trailers
- Trade Shows, etc. Medical Exam Rooms
- Lab and Testing Facilities

Model	Color Option	List Price
Single Compartment Basin		
ADSTK-LM-SS1N	Black	\$2,214 ²⁵
ADSTC-LM-SS1N	Cherry	
ADSTH-LM-SS1N	Mahogany	
ADSTM-LM-SS1N	Maple	

Specifications	
Model Name	Premier 1
NSF Certified	Yes
SACERS Rating	12, 3.4, 5.1, 5.2
Electrical Requirements	110V, 20A Dedicated Outlet and Breaker
Product Dimensions	25.50" W x 17.50" D x 36" H
Product Weight	88 lbs.
On-Demand Hot Water	Approx. 40°F Above Fresh Water Temperature
Fresh Water Tank	5 Gallon Capacity, FDA Approval
Waste Water Tank	6 Gallon Capacity, FDA Approval
Approx Handwashings	42 qty. 15-Second Handwashings
GPM	0.50
Basin Style	Single
Basin Material	Stainless Steel
Basin Dimensions	12" W x 10" L x 5.75" D
Faucet Style	Goose Neck Spout, ADA Compliant Handles
Countertop Material	Phthalate, Lead Free Millwork
Cabinet Material	Phthalate, Lead Free Millwork
Cabinet Wheels	Standard 3" Front Locking/Swivel Casters
Door Lock	Keyless
Soap Dispenser	Liquid Only, Countertop Mount
Warranty	2 Year (see warranty for details)

Minimum Operating Requirements	
Each sink must use a grounded, dedicated 110V, 20A circuit breaker	
Sinks must be used on a dry, level indoor surface	
Extension cord must be 12/3, rated at 20A or higher	
Water must meet EPA standards (PH between 7.0 and 9.0)	

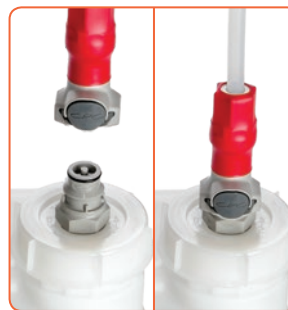
Designs, availability, colors, specifications, dimensions and models are subject to change without notice.
 ©2018 Integrity Distribution LLC · Date: 03/06/2018



5" Xtra-Duty Caster Upgrade



Quick Connect Tank



IMPORTANT:

Consult with your state and local environmental health official to confirm usage of portable sinks in place of plumbing.

Handwashing Compliance

Ozark River is the Standard

NSF® CERTIFICATION

NSF® Certification is a key factor separating Ozark River Portable Sinks® from its competitors. NSF® is the most recognized sanitation standard in many industries. Certification is critical to help ensure Ozark River Portable Sinks® complies with most state and local handwashing codes.

SACERS RATING

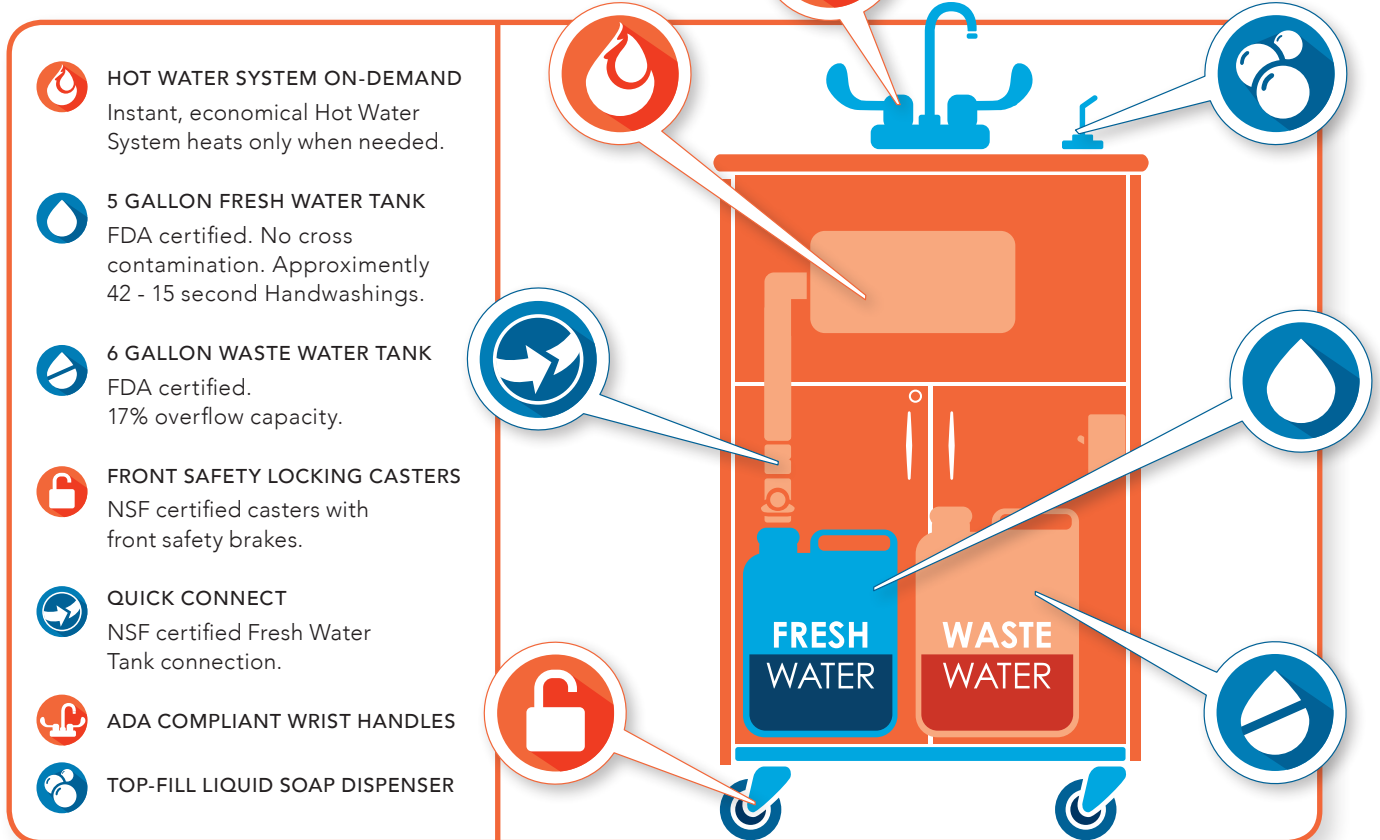
SACERS provides an easy to use resource for defining high-quality care and assessing levels of quality in child care programs. Ozark River Portable Sinks directly affect SACERS, increasing the rating.

SACERS Rating: 12 - 3.4 - 5.1 - 5.2

ENERGY AND WATER SAVINGS

Our reliable, instant hot water system uses a minimal amount of energy to heat the water. No preheating of water is required. Sinks also dispense a sensible 1/2 gallon of water per minute (GPM), providing a perfect, economical stream of water for handwashing while conserving precious water resources.

Consult with your state and local environmental health official to confirm usage of portable sinks in place of plumbing.



OzarkRiver.com
Greater Nashville Area
Toll Free: 1.866.663.1982
Office: 1.615.203.3078

