



# Advantage Series

## Portable Hot Water Handwashing Sink

IF YOU REQUIRE ADDITIONAL COUNTER SPACE AND LOCKING STORAGE, OUR **ADVANTAGE SERIES** hot water hand sinks offer both. This model includes a millwork countertop and deep single stainless steel basin. Standard features on the **Advantage Series** include a soap dispenser, ADA compliant faucet handles, and adjustable shelves.

The roomy 24" x 48" cabinet is available in two natural wood grain finishes and features our stainless steel cabinet bottom that includes swivel casters for easier mobility. This model also offers the ability to add an extra set of water tanks for continuous usage (additional costs will apply).



ADVANTAGE 1D



# Advantage 1D

Millwork Countertop / Deep Single Stainless Basin

## Use and Applications

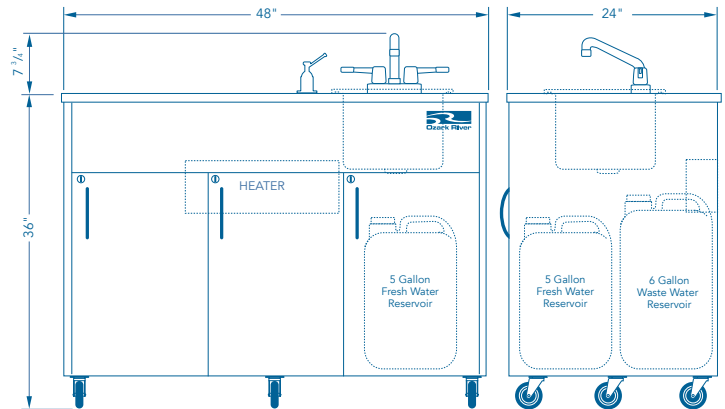
- Food and Beverage Serving or Mall Kiosks
- Hospitality
- Catering Events
- Cafeterias
- Mobile Trailers
- Classrooms and Schools
- Medical Exam Rooms
- Lab and Testing Facilities
- Trade Shows, etc.

Model		List Price
<b>Deep Single Compartment Basin</b>		
ADAVM-LM-SS1DN	Maple, Millwork	\$3,060 <sup>25</sup>
ADAVC-LM-SS1DN	Cherry, Millwork	

Specifications	
Model Name	Advantage 1D
NSF Certified	Yes
SACERS Rating	12, 3.4, 5.1, 5.2
Electrical Requirements	110V, 20A Dedicated Outlet and Breaker
Product Dimensions	48" W x 24" D x 36" H
Product Weight	190 lbs.
On-Demand Hot Water	Approx. 40°F Above Fresh Water Temperature
Fresh Water Tank	5 Gallon Capacity, FDA Approval
Waste Water Tank	6 Gallon Capacity, FDA Approval
Approx Handwashings	42 qty. 15-Second Handwashings
GPM	0.50
Basin Style	Deep Single
Basin Material	Stainless Steel
Basin Dimensions	14" W x 10" L x 9.75" D
Faucet Style	D-Spout, ADA Compliant Handles
Countertop Material	Phthalate, Lead Free Millwork
Cabinet Material	Phthalate, Lead Free Millwork
Cabinet Wheels	Standard 3" Front Locking/Swivel Casters
Door Lock	Keyless
Soap Dispenser	Liquid Only, Countertop Mount
Warranty	2 Year (see warranty for details)

Minimum Operating Requirements	
Each sink must use a grounded, dedicated 110V, 20A circuit breaker	
Sinks must be used on a dry, level indoor surface	
Extension cord must be 12/3, rated at 20A or higher	
Water must meet EPA standards (PH between 7.0 and 9.0)	

Designs, availability, colors, specifications, dimensions and models are subject to change without notice. ©2018 Integrity Distribution LLC - Date: 03/06/2018



5" Xtra-Duty Caster Upgrade



Quick Connect Tank



### IMPORTANT:

Consult with your state and local environmental health official to confirm usage of portable sinks in place of plumbing.

OzarkRiver.com  
 Toll Free: 1-866-663-1982  
 Office: 615-203-3078  
 Greater Nashville Area



# Handwashing Compliance

## Ozark River is the Standard

### NSF® CERTIFICATION

NSF® Certification is a key factor separating Ozark River Portable Sinks® from its competitors. NSF® is the most recognized sanitation standard in many industries. Certification is critical to help ensure Ozark River Portable Sinks® complies with most state and local handwashing codes.

### SACERS RATING

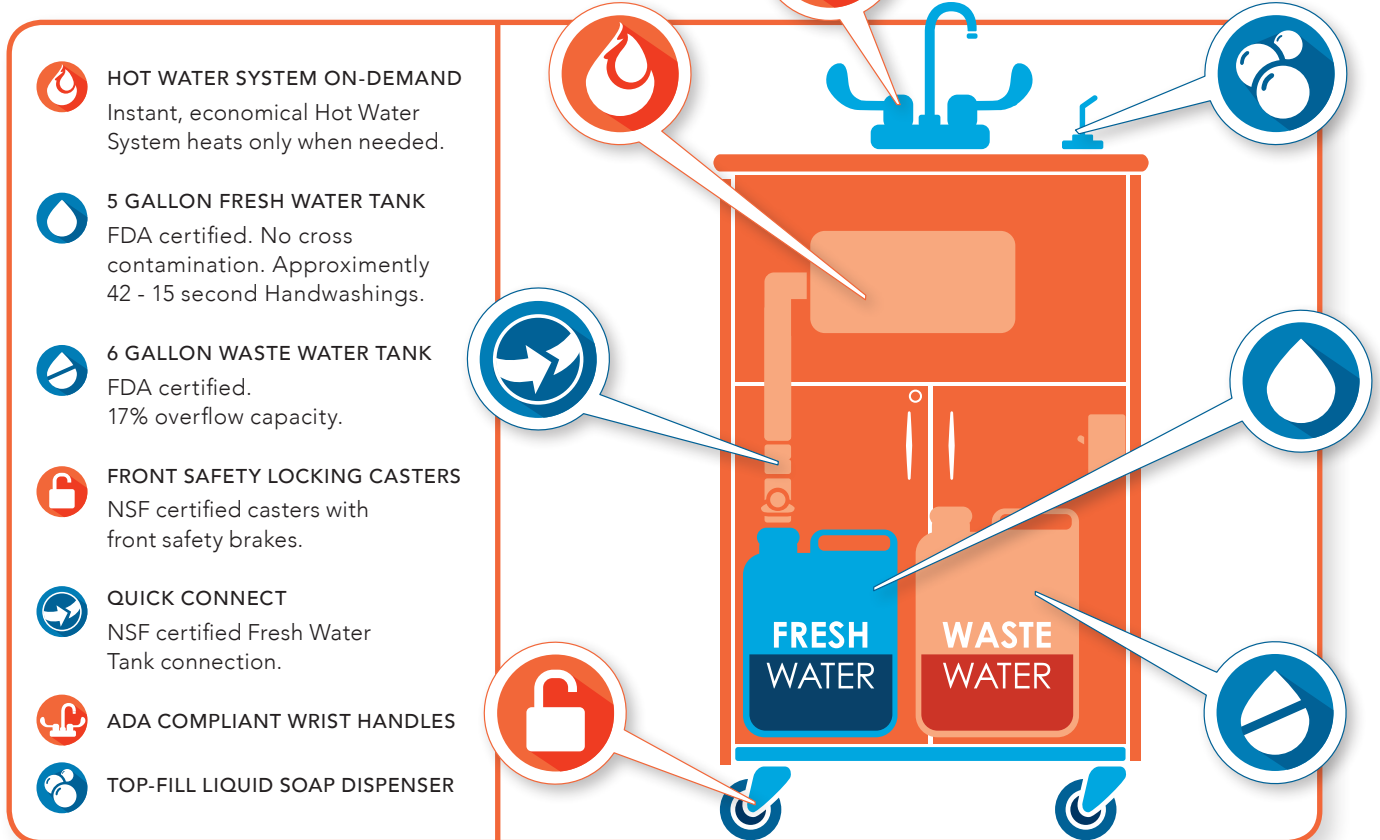
SACERS provides an easy to use resource for defining high-quality care and assessing levels of quality in child care programs. Ozark River Portable Sinks directly affect SACERS, increasing the rating.

**SACERS Rating: 12 - 3.4 - 5.1 - 5.2**

### ENERGY AND WATER SAVINGS

Our reliable, instant hot water system uses a minimal amount of energy to heat the water. No preheating of water is required. Sinks also dispense a sensible 1/2 gallon of water per minute (GPM), providing a perfect, economical stream of water for handwashing while conserving precious water resources.

*Consult with your state and local environmental health official to confirm usage of portable sinks in place of plumbing.*



**HOT WATER SYSTEM ON-DEMAND**  
Instant, economical Hot Water System heats only when needed.

**5 GALLON FRESH WATER TANK**  
FDA certified. No cross contamination. Approximately 42 - 15 second Handwashings.

**6 GALLON WASTE WATER TANK**  
FDA certified.  
17% overflow capacity.

**FRONT SAFETY LOCKING CASTERS**  
NSF certified casters with front safety brakes.

**QUICK CONNECT**  
NSF certified Fresh Water Tank connection.

**ADA COMPLIANT WRIST HANDLES**

**TOP-FILL LIQUID SOAP DISPENSER**

OzarkRiver.com  
Greater Nashville Area  
Toll Free: 1.866.663.1982  
Fax: 1.877.841.3422

