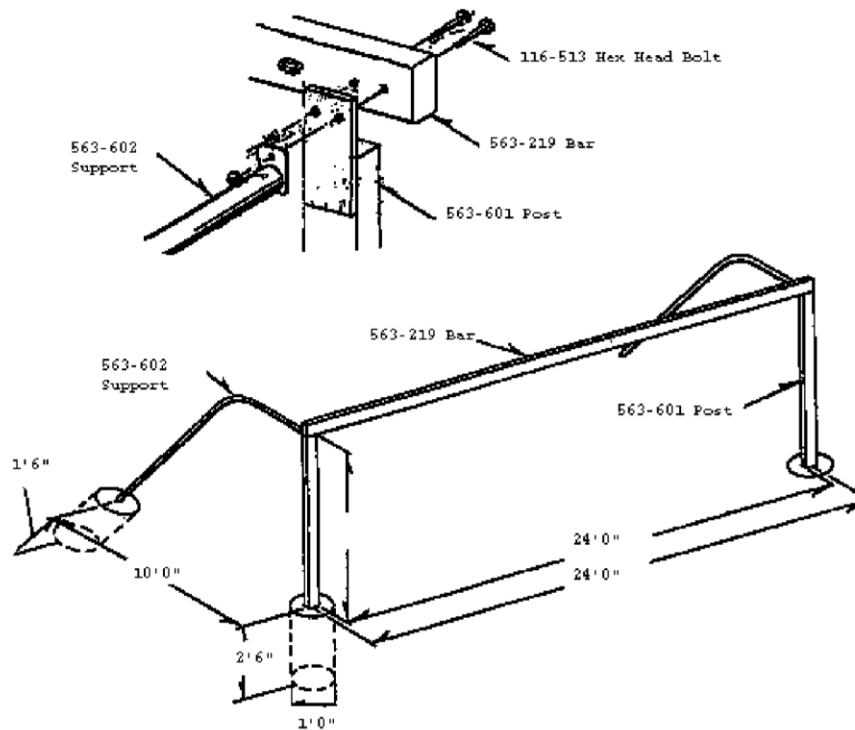


# 561-501 Official Soccer Goal (Pair)

## \* IMPORTANT \*

PLEASE RETAIN THIS INSTRUCTION SHEET IN YOUR FILES. IT CONTAINS IMPORTANT REPLACEMENT PARTS INFORMATION. ALL EQUIPMENT SHOULD BE INSTALLED IN ACCORDANCE WITH THESE INSTRUCTIONS.

IT IS IMPORTANT TO USE AND MAINTAIN ALL PUBLIC PLAYGROUND EQUIPMENT PROPERLY. PLAYGROUND EQUIPMENT, WHICH IS IMPROPERLY MAINTAINED, CAN CAUSE SERIOUS INJURY. PERIODICAL INSPECTIONS, MAINTENANCE, REPAIR AND/OR REPLACEMENT OF DAMAGED PARTS IS NECESSARY FOR SAFE OPERATION OF EQUIPMENT AND SAFETY OF USERS. RESILIENT SURFACING SHOULD BE USED UNDER ALL PLAYGROUND EQUIPMENT. APPROPRIATE PUBLICATIONS, AVAILABLE AT NO CHARGE, FROM THE CONSUMER PRODUCT SAFETY COMMISSION, INCLUDE "A HANDBOOK FOR PUBLIC PLAYGROUND SAFETY." YOU CAN RECEIVE YOUR FREE COPY BY CALLING 1-301-504-7908.



QTY		PACKING LIST
1	CTN	Hardware Bag
4	WF	1 563-601 Goal Post
2	WF	1 563-219 Cross Bar
4	PIPE	1 563-602 Net Support

QTY		HARDWARE BAG
2	337-303	Yellow Cord x 100' Long
4	337-303	Yellow Cord x 25' Long
8	116-513	5/16" x 3 1/4" Hex Head Bolt
8	226-501	5/16" Lock Nut

4 PIPE	1 CTN	6 WF	11 TOTAL PCS	WT 570#	CLASS 70
--------	-------	------	--------------	---------	----------

## 561-501 Official Soccer Goal (Pair)

Page 2 of 2  
Rev 11/07/19

**NOTE:** All threaded ends of bolts protruding beyond nuts must be cut off and/or peened to eliminate sharp edges. No more than two threads should extend beyond face of nut.  
All washers, "T" nuts, and other fastener hardware used on round pipe or tubing must be hammered down to conform to the curved underlying surface to eliminate catch points.

**DO NOT tighten nuts more than hand-tight until entire assembly is completed.**

STEP #1: Mark and dig footing holes

STEP #2: Place 563-601 Uprights in Footing Holes.

Brace uprights so that the bottom does not rest on the footing hole bottom. Make sure uprights are level.

STEP #3: Pour footings using:

12 - 80lb. Bags Pre-Mix Cement - 3 bags per hole.

Be sure to 'cone' the top of the pour for drainage.

STEP #4: Attach 563-219 Bar

STEP #5: Attach 563-602 Supports

NOTES: Wait 48 hours for concrete to harden before using unit.

DO NOT install where overhead electrical wires are present.

### MAINTENANCE INSTRUCTIONS:

Check periodically for loose bolts, broken parts and replace immediately.