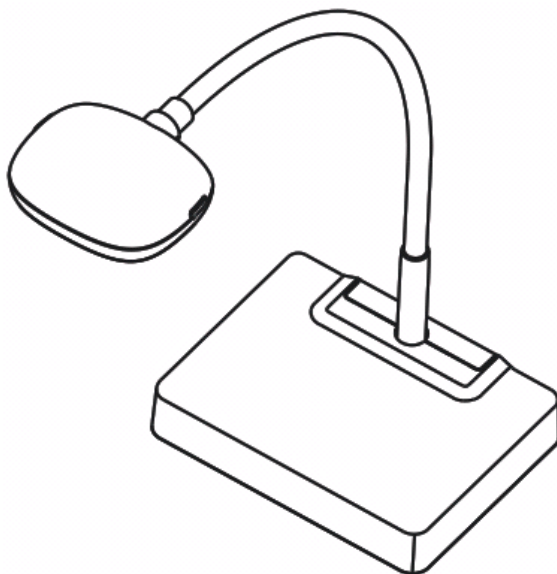


# 3D101 Document Camera

## User Manual



### [Important]

To download the latest version of Quick Start Guide, multilingual user manual, software, or driver, etc., please visit Lumens  
<http://www.Mylumens.com/goto.htm>

# Table of contents

<b>Copyright Information</b> .....	<b>2</b>
<b>Chapter 1 Safety Instructions</b> .....	<b>3</b>
Precautions .....	4
FCC Warning .....	4
EN55022 (CE Radiation) Warning .....	4
<b>Revisions</b> .....	<b>5</b>
<b>Chapter 2 Package Contents</b> .....	<b>6</b>
<b>Chapter 3 Product Overview</b> .....	<b>7</b>
3.1 Relative Operation Position .....	8
3.2 Correct use .....	8
<b>Chapter 4 Installation and Connections</b> .....	<b>9</b>
4.1 Connecting to 3D display .....	9
4.2 Connecting to an Interactive Whiteboard (IWB) .....	9
4.3 Mounting at desk .....	10
4.4 Installing application software .....	10
<b>Chapter 5 Start Using</b> .....	<b>13</b>
5.1 Description of LED indicator .....	14
<b>Chapter 6 Troubleshooting</b> .....	<b>15</b>

# Copyright Information

---

Copyrights © Lumens Digital Optics Inc. All rights reserved.

Lumens is a trademark that is currently being registered by Lumens Digital Optics Inc.

Copying, reproducing or transmitting this file is not allowed if a license is not provided by Lumens Digital Optics Inc. unless copying this file is for the purpose of backup after purchasing this product.

In order to keep improving the product, Lumens Digital Optics Inc. hereby reserves the right to make changes to product specifications without prior notice. The information in this file is subject to change without prior notice.

To fully explain or describe how this product should be used, this manual may refer to names of other products or companies, nevertheless without any intention of infringement.

Disclaimer of warranties: Lumens Digital Optics Inc. is neither responsible for any possible technological, editorial errors or omissions, nor responsible for any incidental or related damages arising from providing this file, using, or operating this product.

# Chapter 1 Safety Instructions





---

Always follow these safety instructions when setting up and using the Document Camera:

1. Do not place Document Camera in tilted position.
2. Do not place the Document Camera on an unstable trolley, stand or table.
3. Do not use the Document Camera near water or source of heat.
4. Use attachments only as recommended.
5. Do not block the slots and openings in the Document Camera case. They provide ventilation and prevent the Document Camera from overheating. Do not place the Document Camera on a sofa, rug or other soft surface or in a built-in installation unless proper ventilation is provided.
6. Never push objects of any kind through cabinet slots. Never allow liquid of any kind to spill onto the Document Camera.
7. Except as specifically instructed in this User Manual, do not attempt to operate this product by yourself. Opening or removing covers may expose you to dangerous voltages and other hazards. Refer all servicing to licensed service personnel.
8. Remove the Document Camera during thunderstorms or if it is not going to be used for an extended period. Do not place the Document Camera or remote control on top of heat-emitting equipment or shaking objects such as a car, etc.
9. If any liquid, rain or water splashes on the Document Camera, please remove the Document Camera and call the qualified service personnel for maintenance.

## ■ Precautions

**Warning: To reduce the risk of fire or electric shock, do not expose this appliance to rain or moisture.**

		<div style="border: 1px solid black; padding: 5px;"> <p>Caution</p> <p style="background-color: black; color: white; padding: 2px;">Risk of Electric Shock</p> </div>		
<p>Caution: To reduce the risk of electric shock, do not remove cover (or back). No user-serviceable parts inside. Refer servicing to licensed service Personnel.</p>				
	<p>This symbol indicates that this equipment may contain dangerous voltage which could cause electric shock.</p>		<p>This symbol indicates that there are important operating and maintenance instructions in this User Manual with this unit.</p>	

## ■ FCC Warning

This Document Camera has been tested and found to comply with the limits for a Class A, Clause J digital device, pursuant to Part 15 of FCC Rules. These limits are designed to provide reasonable protection against harmful interference in a commercial installation.

## ■ EN55022 (CE Radiation) Warning

This product is intended for use in a commercial, industrial, or educational environment. It is not intended for residential use.

This is a Class A product. In a domestic environment it may cause radio interference, in which case the user may be required to take adequate measures. The typical use is in a conference room, meeting room or auditorium.

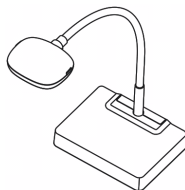
# Revisions

---

# Chapter 2 Package Contents

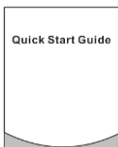
---

3D101



Quick Start Guide

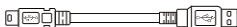
(For download of other language versions, please visit Lumens website)



4-Steps Card

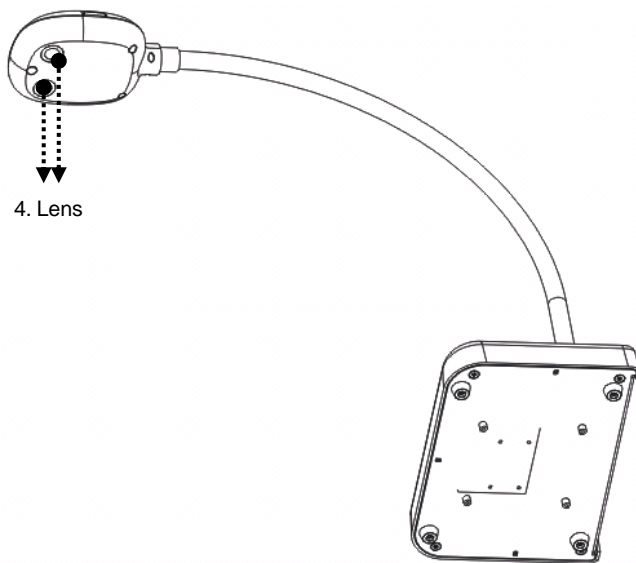
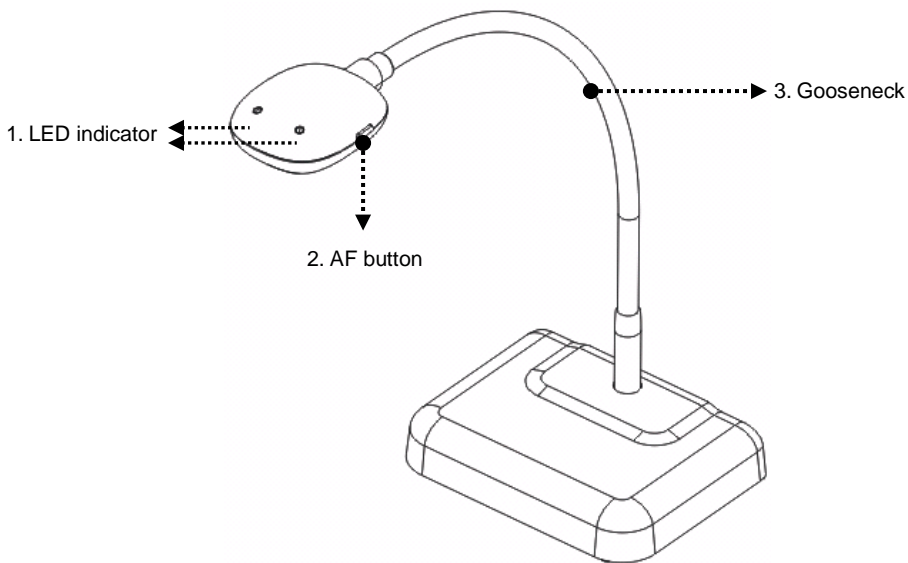


USB Cable



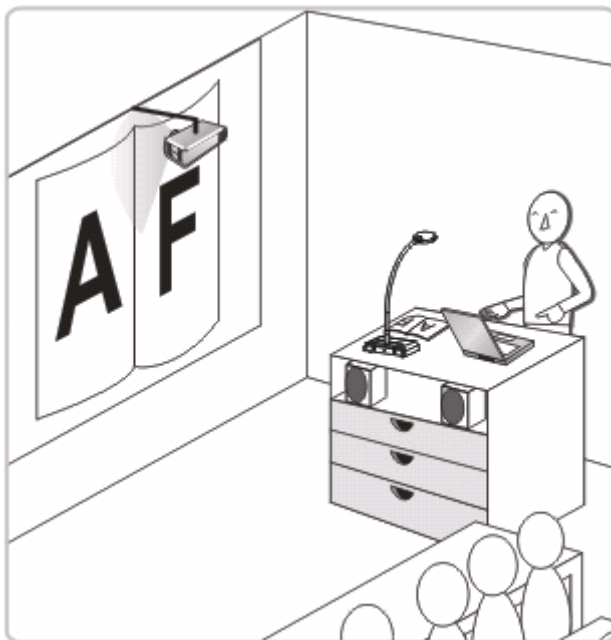
# Chapter 3 Product Overview

---

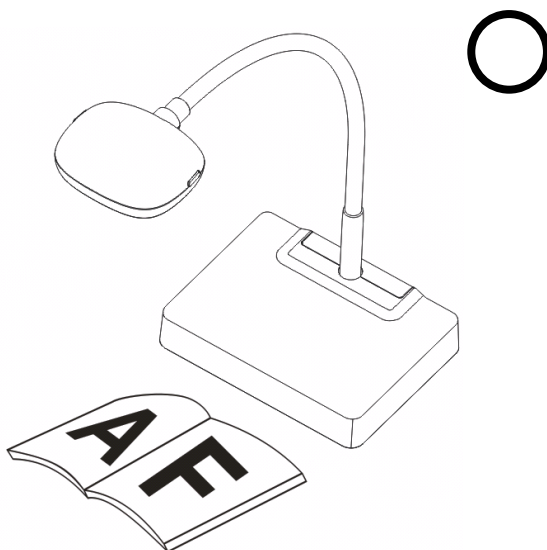




### 3.1 Relative Operation Position

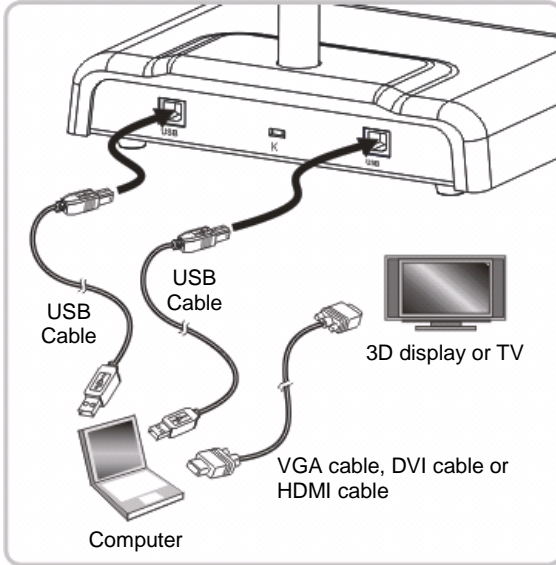


### 3.2 Correct use

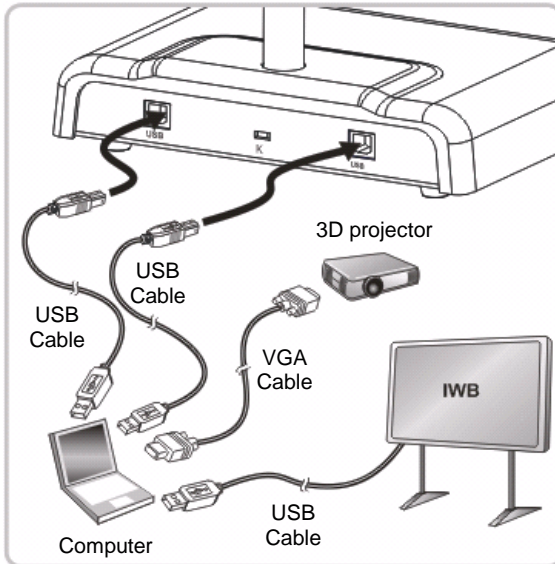


# Chapter 4 Installation and Connections

## 4.1 Connecting to 3D display

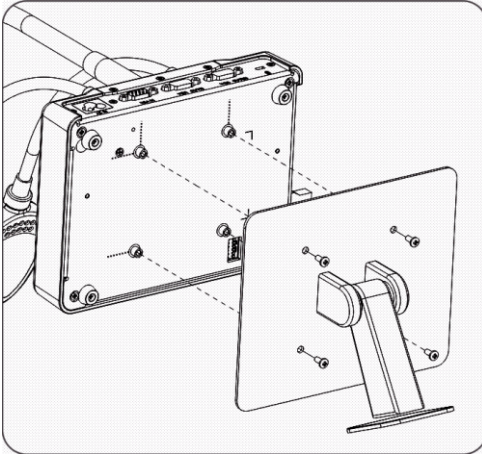


## 4.2 Connecting to an Interactive Whiteboard (IWB)



## 4.3 Mounting at desk

1. Please purchase the standard VESA installation base.
2. Please use appropriate screws: Screw length = 5 mm + base thickness (H1); M4 screw (P = 0.7)



- VESA bolt pitch 75 \* 75 mm
- VESA base thickness (H1)
- Screw length = 5 mm + base thickness (H1)
- M4 screw (P = 0.7)

## 4.4 Installing application software

After installing Lumens image software, you can use the following functions:

- Control the 3D101.
- Capture and record images.
- Annotate the image, highlight important details and save it.
- Support the full screen function.

**<Note> 3D functions must be used together with 3D computer, 3D display and 3D display software. It is recommended to use the software**

### 1. 3D-Hub Interactive Media Player

<http://www.3d-hub.co.uk/3d-hub-player.php>

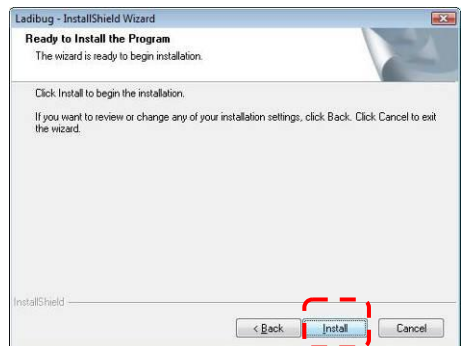
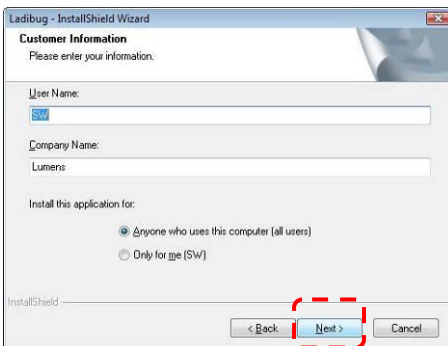
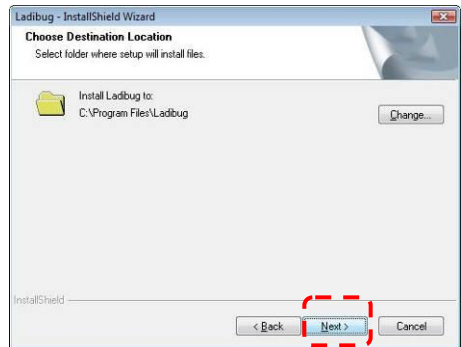
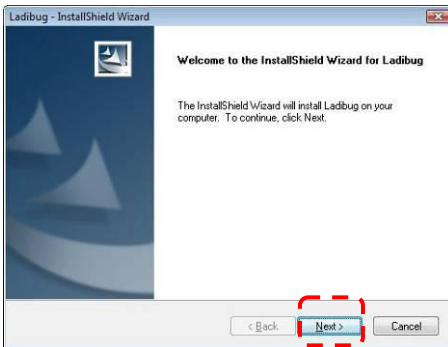
### 2. together with Stereoscopic Multiplexer and Stereoscopic Player

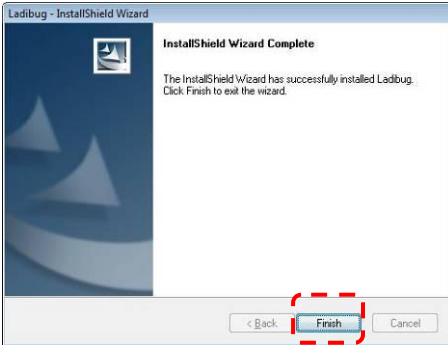
## 4.4.1 System requirements

Windows XP	Windows Vista / Windows 7 / Windows 8
<ul style="list-style-type: none"><li>● Min CPU: P4 2.8 GHz</li><li>● Min Memory: 512 MB</li><li>● Supporting Direct X 9</li><li>● Min Resolution: 1024 x 768</li><li>● Min Hard Drive Space: 100 MB</li><li>● Windows XP SP2 or above</li></ul>	<ul style="list-style-type: none"><li>● Min CPU: P4 2.8 GHz</li><li>● Min Memory: 1 GB (32-bits)/ 2 GB (64-bits)</li><li>● Supporting Direct X 9</li><li>● Min Resolution: 1024 x 768</li><li>● Min Hard Drive Space: 100 MB</li></ul>

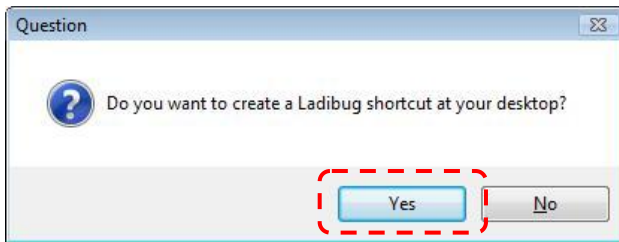
## 4.4.2 Install software

1. Please download **Ladibug™** software at **Lumens website**.
2. Extract the file downloaded and then click **[Setup]** to install.
3. Select language.
4. The installation wizard will guide you through the process. Please follow the on-screen instructions and press **[Next]** for the next step.

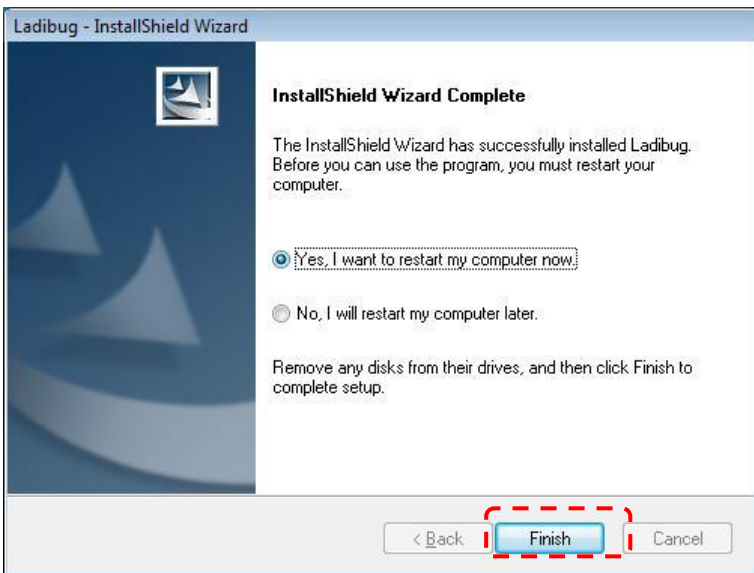




5. Press **[Yes]** to create Ladibug™ shortcut on your desktop.

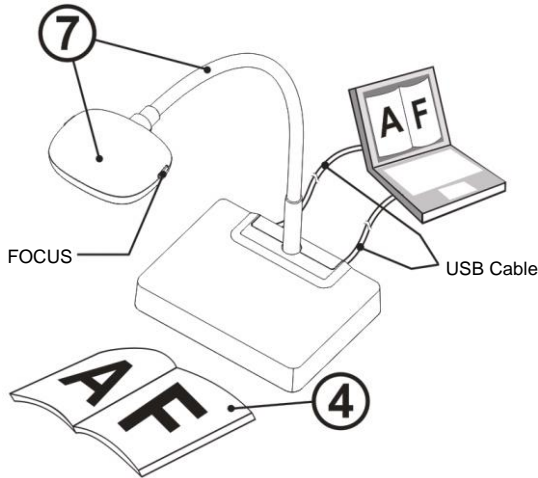




6. Press **[Finish]** and restart the computer.




# Chapter 5 Start Using

<Note> Ensure that the USB cable is connected and Ladibug™ software is installed at first. Refer to [Chapter 4 Installation and Connections](#) in this user manual.




1. Double click on  icon to open Ladibug™ Software.
2. Move the mouse to  icon, and the main function menu will be displayed.

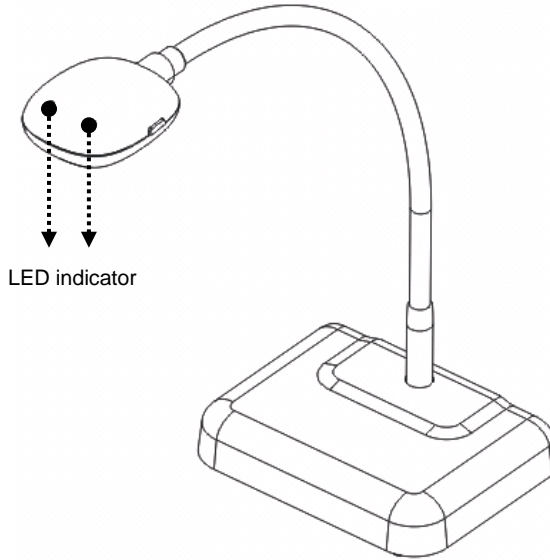


3. Place the object to be displayed under the camera.
4. Press  to display the setting screen of **POWER Frequency**, and follow the screen instructions. A live image is displayed when the setting is finished. (※ This setting is required for the first use only.)

**Note:** You are advised to confirm the local voltage/frequency before setting the POWER Frequency. For example, 60Hz is applicable for America, Taiwan, Japan, etc; 50Hz is applicable for Europe or other regions.

5. Press  button to optimize the image. You are ready to teach or present.
  6. Adjust the gooseneck as needed and press [FOCUS] button.
- \* Each time the camera head is moved, press the [FOCUS] button to refocus the lens.

## 5.1 Description of LED indicator



1. Enable the image, LED indicator will light up.
2. Display the image, LED indicator will light up.
3. Disable the image, LED indicator is OFF.

# Chapter 6 Troubleshooting

This chapter describes problems you may encounter while using 3D101. If you have questions, please refer to related chapters and follow all the suggested solutions. If the problem still occurred, please contact our distributors or service center.

No.	Problems	Solutions
1	<b>Boot without power signal</b>	Ensure that the USB cable is connected.
2	<b>Unable to focus</b>	Probably the document is too close. Please pull the document away from the lens, and then press the [AF] button on both lateral sides of the lens.
3	<b>3D101 cannot operate normally</b>	Probably the machine cannot operate normally due to the insufficient power supply of the USB port at the front end of the computer. Please change the connection to other USB port.
4	<b>Cannot identify 3D101</b>	Outdated or incomplete OS versions might not be able to identify USB devices like 3D101. Please use Windows XP SP2 or newer versions that are compatible.
5	<b>Output screen flicker</b>	Ladibug™ current frequency presetting value is 60 (Hz), if current frequency of your local country is 50 (Hz), during the use of Ladibug™, output screen flicker may occur. Please refer to <a href="#">Ladibug User Manual</a> to change Power frequency to 50 (Hz).
6	<b>Digital Zoom function is not available</b>	Please open Options to confirm whether Software Mode is set to <b>Annotation Mode</b> , please refer to <a href="#">Ladibug User Manual</a> for detailed setting.
7	<b>No picture output of 3D101</b>	<ol style="list-style-type: none"><li>1. Please confirm whether USB cable used for connection between 3D101 and the computer is connected to USB hub. If the hub is used, please remove the hub and connect USB cable to the computer.</li><li>2. If USB cable used for connection between the computer and 3D101 has been connected to the computer directly, please remove USB cable, and connect it to another USB port.</li></ol>